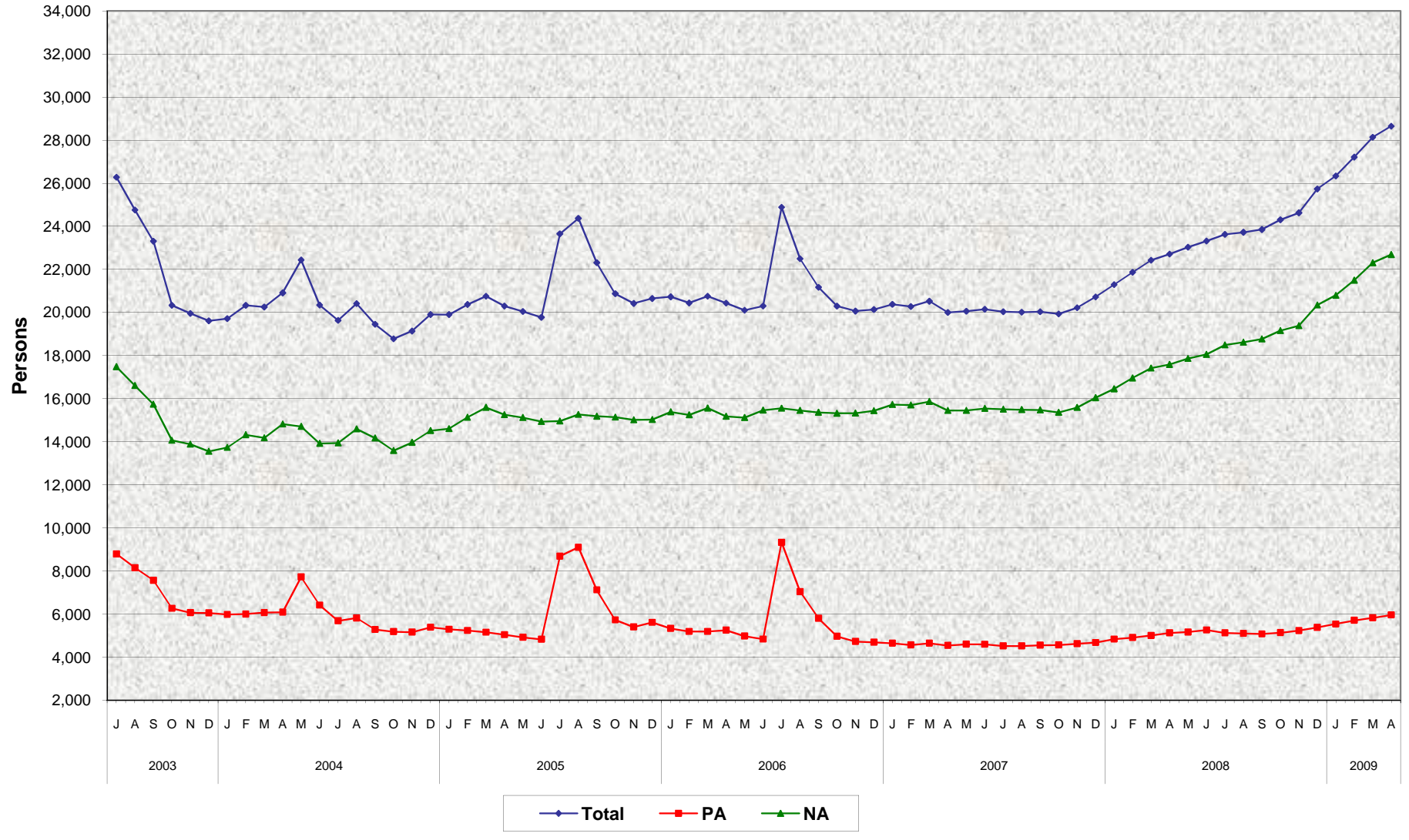


California Food Assistance Program (CFAP) Total, Public Assistance (PA), and Nonassistance (NA) Persons July 2003 - April 2009



**California Food Assistance Program (CFAP)
Total, Public Assistance (PA), and Nonassistance (NA) Persons
July 2003 - April 2009**

MONTHLY PERCENT CHANGE

		Jul	% Chg	Aug	% Chg	Sep	% Chg	Oct	% Chg	Nov	% Chg	Dec	% Chg	Jan	% Chg	Feb	% Chg	Mar	% Chg	Apr	% Chg	May	% Chg	Jun	% Chg
03/04	Total	26,278	-12.1%	24,761	-5.8%	23,311	-5.9%	20,336	-12.8%	19,960	-1.8%	19,614	-1.7%	19,720	0.5%	20,332	3.1%	20,258	-0.4%	20,914	3.2%	22,441	7.3%	20,348	-9.3%
	PA	8,796	-13.0%	8,152	-7.3%	7,570	-7.1%	6,270	-17.2%	6,071	-3.2%	6,057	-0.2%	5,984	-1.2%	6,004	0.3%	6,074	1.2%	6,089	0.2%	7,726	26.9%	6,420	-16.9%
	NA	17,482	-11.6%	16,609	-5.0%	15,741	-5.2%	14,066	-10.6%	13,889	-1.3%	13,557	-2.4%	13,736	1.3%	14,328	4.3%	14,184	-1.0%	14,825	4.5%	14,715	-0.7%	13,928	-5.3%
04/05	Total	19,634	-3.5%	20,416	4.0%	19,458	-4.7%	18,779	-3.5%	19,141	1.9%	19,908	4.0%	19,905	0.0%	20,374	2.4%	20,758	1.9%	20,303	-2.2%	20,048	-1.3%	19,778	-1.3%
	PA	5,690	-11.4%	5,821	2.3%	5,286	-9.2%	5,189	-1.8%	5,169	-0.4%	5,389	4.3%	5,299	-1.7%	5,241	-1.1%	5,162	-1.5%	5,047	-2.2%	4,922	-2.5%	4,835	-1.8%
	NA	13,944	0.1%	14,595	4.7%	14,172	-2.9%	13,590	-4.1%	13,972	2.8%	14,519	3.9%	14,606	0.6%	15,133	3.6%	15,596	3.1%	15,256	-2.2%	15,126	-0.9%	14,943	-1.2%
05/06	Total	23,654	19.6%	24,371	3.0%	22,315	-8.4%	20,876	-6.4%	20,422	-2.2%	20,651	1.1%	20,729	0.4%	20,445	-1.4%	20,759	1.5%	20,439	-1.5%	20,106	-1.6%	20,304	1.0%
	PA	8,689	79.7%	9,102	4.8%	7,129	-21.7%	5,734	-19.6%	5,403	-5.8%	5,619	4.0%	5,339	-5.0%	5,195	-2.7%	5,196	0.0%	5,260	1.2%	4,984	-5.2%	4,839	-2.9%
	NA	14,965	0.1%	15,269	2.0%	15,186	-0.5%	15,142	-0.3%	15,019	-0.8%	15,032	0.1%	15,390	2.4%	15,250	-0.9%	15,563	2.1%	15,179	-2.5%	15,122	-0.4%	15,465	2.3%
06/07	Total	24,886	22.6%	22,497	-9.6%	21,174	-5.9%	20,297	-4.1%	20,066	-1.1%	20,138	0.4%	20,378	1.2%	20,280	-0.5%	20,524	1.2%	20,004	-2.5%	20,060	0.3%	20,150	0.4%
	PA	9,333	92.9%	7,044	-24.5%	5,806	-17.6%	4,974	-14.3%	4,733	-4.8%	4,694	-0.8%	4,648	-1.0%	4,573	-1.6%	4,653	1.7%	4,551	-2.2%	4,605	1.2%	4,599	-0.1%
	NA	15,553	0.6%	15,453	-0.6%	15,368	-0.6%	15,323	-0.3%	15,333	0.1%	15,444	0.7%	15,730	1.9%	15,707	-0.1%	15,871	1.0%	15,453	-2.6%	15,455	0.0%	15,551	0.6%
07/08	Total	20,038	-0.6%	20,018	-0.1%	20,034	0.1%	19,937	-0.5%	20,222	1.4%	20,724	2.5%	21,296	2.8%	21,871	2.7%	22,428	2.5%	22,716	1.3%	23,036	1.4%	23,319	1.2%
	PA	4,527	-1.6%	4,524	-0.1%	4,557	0.7%	4,573	0.4%	4,629	1.2%	4,680	1.1%	4,841	3.4%	4,914	1.5%	5,010	2.0%	5,128	2.4%	5,170	0.8%	5,264	1.8%
	NA	15,511	-0.3%	15,494	-0.1%	15,477	-0.1%	15,364	-0.7%	15,593	1.5%	16,044	2.9%	16,455	2.6%	16,957	3.1%	17,418	2.7%	17,588	1.0%	17,866	1.6%	18,055	1.1%
08/09	Total	23,628	1.3%	23,725	0.4%	23,852	0.5%	24,306	1.9%	24,627	1.3%	25,735	4.5%	26,337	2.3%	27,214	3.3%	28,136	3.4%	28,649	1.8%				
	PA	5,134	-2.5%	5,103	-0.6%	5,080	-0.5%	5,145	1.3%	5,239	1.8%	5,387	2.8%	5,539	2.8%	5,713	3.1%	5,828	2.0%	5,961	2.3%				
	NA	18,494	2.4%	18,622	0.7%	18,772	0.8%	19,161	2.1%	19,388	1.2%	20,348	5.0%	20,798	2.2%	21,501	3.4%	22,308	3.8%	22,688	1.7%				

TRENDS

- **CFAP persons increased 1.8% between March 2009 and April 2009.**
2.3% increase in PA persons
1.7% increase in NA persons
- **CFAP persons increased 26.1% between April 2008 and April 2009.**
16.2% increase in PA persons
29.0% increase in NA persons