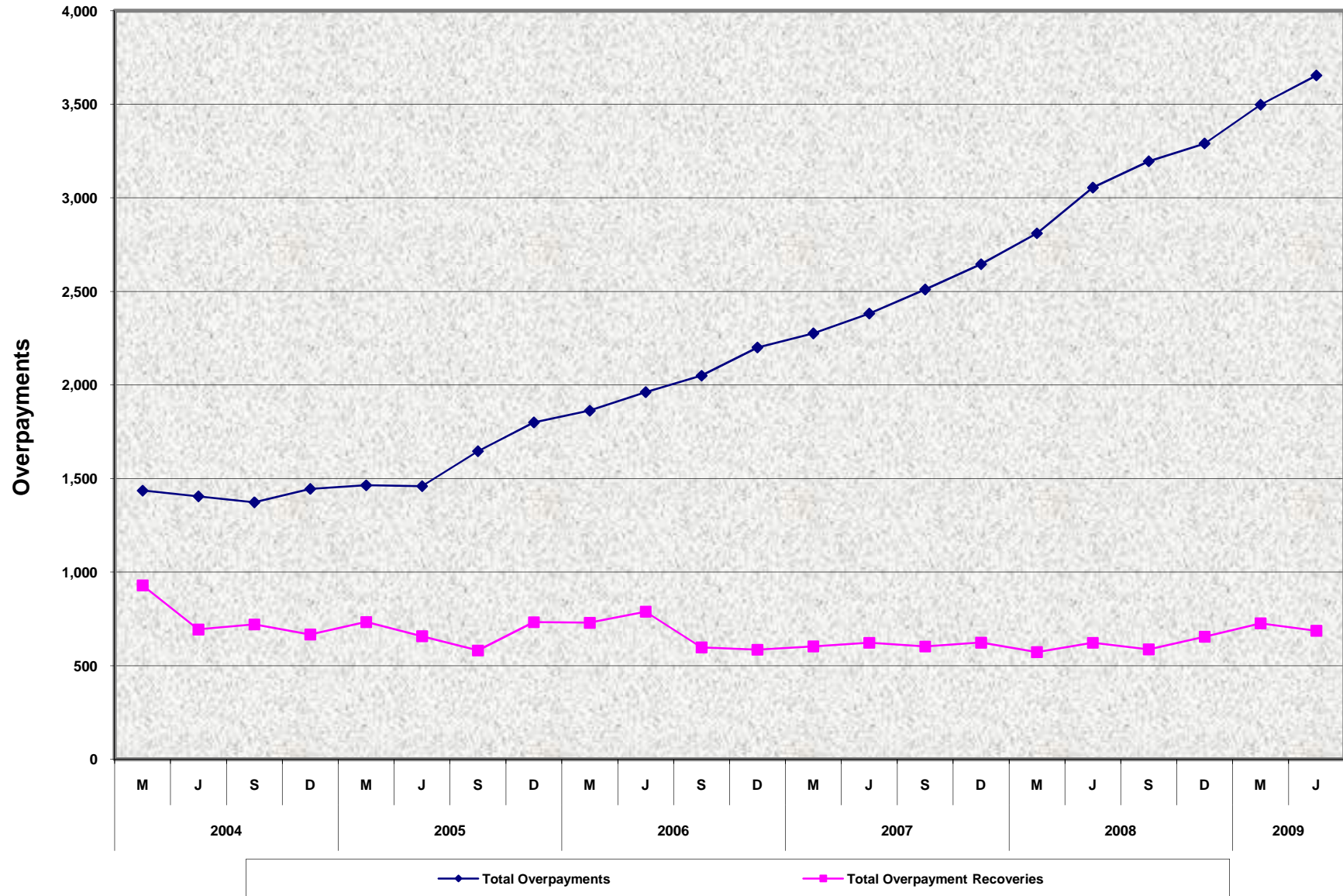


Quarterly Report of Overpayments and Collections for the Cash Assistance Program for Immigrants Total Overpayments and Total Overpayment Recoveries^{a/} January/March 2004 - April/June 2009



^{a/} Includes cash collections, grant reductions and underpayments offset.
 Prior quarter data Jul-Sep08 used for Imperial.
 Source: SOC 808

**Quarterly Report of Overpayments and Collections for the Cash Assistance Program for Immigrants
Total Overpayments and Total Overpayment Recoveries^{a/}
January/March 2004 - April/June 2009**

QUARTERLY PERCENT CHANGE

		Sep	% Chg	Dec	% Chg	Mar	% Chg	Jun	% Chg
03/04	Total Overpayments					1,436	4.0%	1,405	-2.2%
	Total Overpayment Recoveries					930	9.0%	694	-25.4%
04/05	Total Overpayments	1,373	-2.3%	1,445	5.2%	1,464	1.3%	1,459	-0.3%
	Total Overpayment Recoveries	721	3.9%	667	-7.5%	734	10.0%	658	-10.4%
05/06	Total Overpayments	1,646	12.8%	1,800	9.4%	1,863	3.5%	1,962	5.3%
	Total Overpayment Recoveries	582	-11.6%	733	25.9%	730	-0.4%	789	8.1%
06/07	Total Overpayments	2,050	4.5%	2,201	7.4%	2,276	3.4%	2,382	4.7%
	Total Overpayment Recoveries	598	-24.2%	586	-2.0%	604	3.1%	623	3.1%
07/08	Total Overpayments	2,511	5.4%	2,646	5.4%	2,811	6.2%	3,055	8.7%
	Total Overpayment Recoveries	603	-3.2%	624	3.5%	573	-8.2%	623	8.7%
08/09	Total Overpayments	3,196	4.6%	3,291	3.0%	3,498	6.3%	3,655	4.5%
	Total Overpayment Recoveries	588	-5.6%	655	11.4%	727	11.0%	687	-5.5%

TRENDS

● **Total Overpayments During the Quarter**

The total number of overpayments increased by 4.5% between January/March 2009 and April/June 2009 Quarters.
The total number of overpayments increased by 19.6% between April/June 2008 and April/June 2009 Quarters.

● **Total Overpayment Recoveries During the Quarter**

The number of overpayment recoveries decreased by 5.5% between January/March 2009 and April/June 2009 Quarters.
The number of overpayment recoveries increased by 10.3% between April/June 2008 and April/June 2009 Quarters.

^{a/} Includes cash collections, grant reductions and underpayments offset.
Prior quarter data Jul-Sep08 used for Imperial.
Source: SOC 808