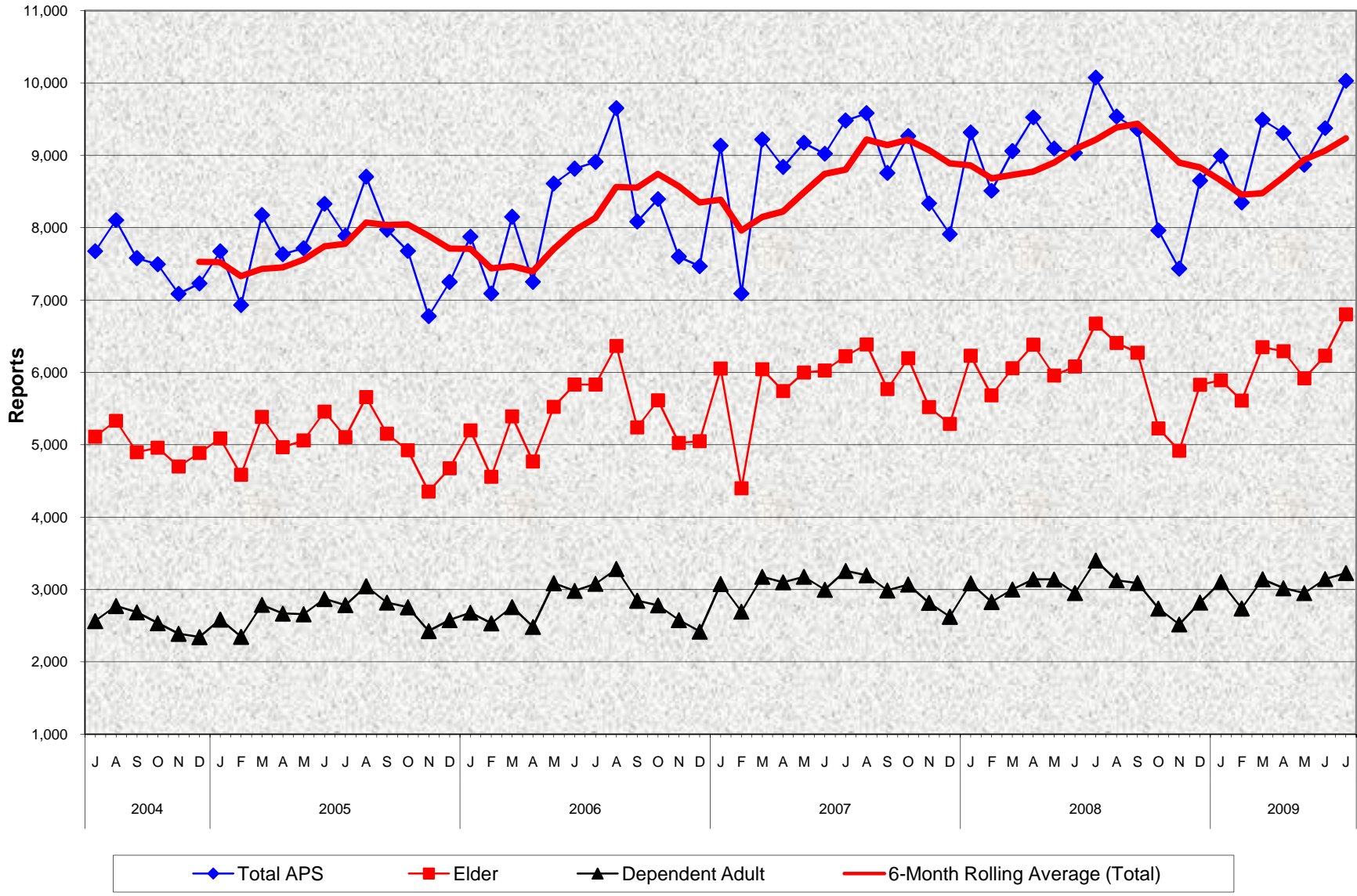


Adult Protective Services (APS) Reports of Alleged Abuse Within APS Jurisdiction July 2004 - July 2009



Adult Protective Services (APS) Reports of Alleged Abuse Within APS Jurisdiction July 2004 - July 2009

MONTHLY PERCENT CHANGE

FY		Jul	% Chg	Aug	% Chg	Sept	% Chg	Oct	% Chg	Nov	% Chg	Dec	% Chg	Jan	% Chg	Feb	% Chg	Mar	% Chg	Apr	% Chg	May	% Chg	Jun	% Chg
04/05	Total	7,673	-3.0%	8,103	5.6%	7,579	-6.5%	7,493	-1.1%	7,085	-5.4%	7,228	2.0%	7,672	6.1%	6,930	-9.7%	8,173	17.9%	7,632	-6.6%	7,715	1.1%	8,328	7.9%
	Elder	5,110	-2.9%	5,330	4.3%	4,894	-8.2%	4,958	1.3%	4,697	-5.3%	4,886	4.0%	5,087	4.1%	4,584	-9.9%	5,385	17.5%	4,964	-7.8%	5,057	1.9%	5,458	7.9%
	Dep. Adult	2,563	-3.2%	2,773	8.2%	2,685	-3.2%	2,535	-5.6%	2,388	-5.8%	2,342	-1.9%	2,585	10.4%	2,346	-9.2%	2,788	18.8%	2,668	-4.3%	2,658	-0.4%	2,870	8.0%
05/06	Total	7,886	-5.3%	8,703	10.4%	7,970	-8.4%	7,677	-3.7%	6,777	-11.7%	7,249	7.0%	7,875	8.6%	7,089	-10.0%	8,149	15.0%	7,250	-11.0%	8,608	18.7%	8,814	2.4%
	Elder	5,102	-6.5%	5,658	10.9%	5,151	-9.0%	4,922	-4.4%	4,351	-11.6%	4,672	7.4%	5,195	11.2%	4,557	-12.3%	5,392	18.3%	4,767	-11.6%	5,521	15.8%	5,832	5.6%
	Dep. Adult	2,784	-3.0%	3,045	9.4%	2,819	-7.4%	2,755	-2.3%	2,426	-11.9%	2,577	6.2%	2,680	4.0%	2,532	-5.5%	2,757	8.9%	2,483	-9.9%	3,087	24.3%	2,982	-3.4%
06/07	Total	8,908	1.1%	9,650	8.3%	8,083	-16.2%	8,394	3.8%	7,599	-9.5%	7,465	-1.8%	9,131	22.3%	7,089	-22.4%	9,217	30.0%	8,839	-4.1%	9,173	3.8%	9,021	-1.7%
	Elder	5,829	-0.1%	6,366	9.2%	5,237	-17.7%	5,613	7.2%	5,022	-10.5%	5,047	0.5%	6,054	20.0%	4,395	-27.4%	6,041	37.5%	5,740	-5.0%	5,997	4.5%	6,024	0.5%
	Dep. Adult	3,079	3.3%	3,284	6.7%	2,846	-13.3%	2,781	-2.3%	2,577	-7.3%	2,418	-6.2%	3,077	27.3%	2,694	-12.4%	3,176	17.9%	3,099	-2.4%	3,176	2.5%	2,997	-5.6%
07/08	Total	9,480	5.1%	9,582	1.1%	8,755	-8.6%	9,265	5.8%	8,334	-10.0%	7,909	-5.1%	9,314	17.8%	8,508	-8.7%	9,057	6.5%	9,523	5.1%	9,093	-4.5%	9,030	-0.7%
	Elder	6,222	3.3%	6,385	2.6%	5,767	-9.7%	6,196	7.4%	5,519	-10.9%	5,285	-4.2%	6,228	17.8%	5,680	-8.8%	6,057	6.6%	6,382	5.4%	5,954	-6.7%	6,080	2.1%
	Dep. Adult	3,258	8.7%	3,197	-1.9%	2,988	-6.5%	3,069	2.7%	2,815	-8.3%	2,624	-6.8%	3,086	17.6%	2,828	-8.4%	3,000	6.1%	3,141	4.7%	3,139	-0.1%	2,950	-6.0%
08/09	Total	10,073	11.6%	9,534	-5.4%	9,361	-1.8%	7,961	-15.0%	7,433	-6.6%	8,648	16.3%	8,991	4.0%	8,347	-7.2%	9,490	13.7%	9,308	-1.9%	8,868	-4.7%	9,374	5.7%
	Elder	6,672	9.7%	6,407	-4.0%	6,271	-2.1%	5,224	-16.7%	4,916	-5.9%	5,828	18.6%	5,888	1.0%	5,609	-4.7%	6,348	13.2%	6,290	-0.9%	5,918	-5.9%	6,229	5.3%
	Dep. Adult	3,401	15.3%	3,127	-8.1%	3,090	-1.2%	2,737	-11.4%	2,517	-8.0%	2,820	12.0%	3,103	10.0%	2,738	-11.8%	3,142	14.8%	3,018	-3.9%	2,950	-2.3%	3,145	6.6%
09/10	Total	10,029	7.0%																						
	Elder	6,801	9.2%																						
	Dep. Adult	3,228	2.6%																						

TRENDS

- **Reports of Alleged Abuse received within APS jurisdiction increased 7.0% between June 2009 and July 2009**
9.2% increase in Elder reports
2.6% increase in Dependent Adult reports
- **Reports of Alleged Abuse received within APS jurisdiction decreased -0.4% between July 2008 and July 2009**
1.9% increase in Elder reports
-5.1% decrease in Dependent Adult reports