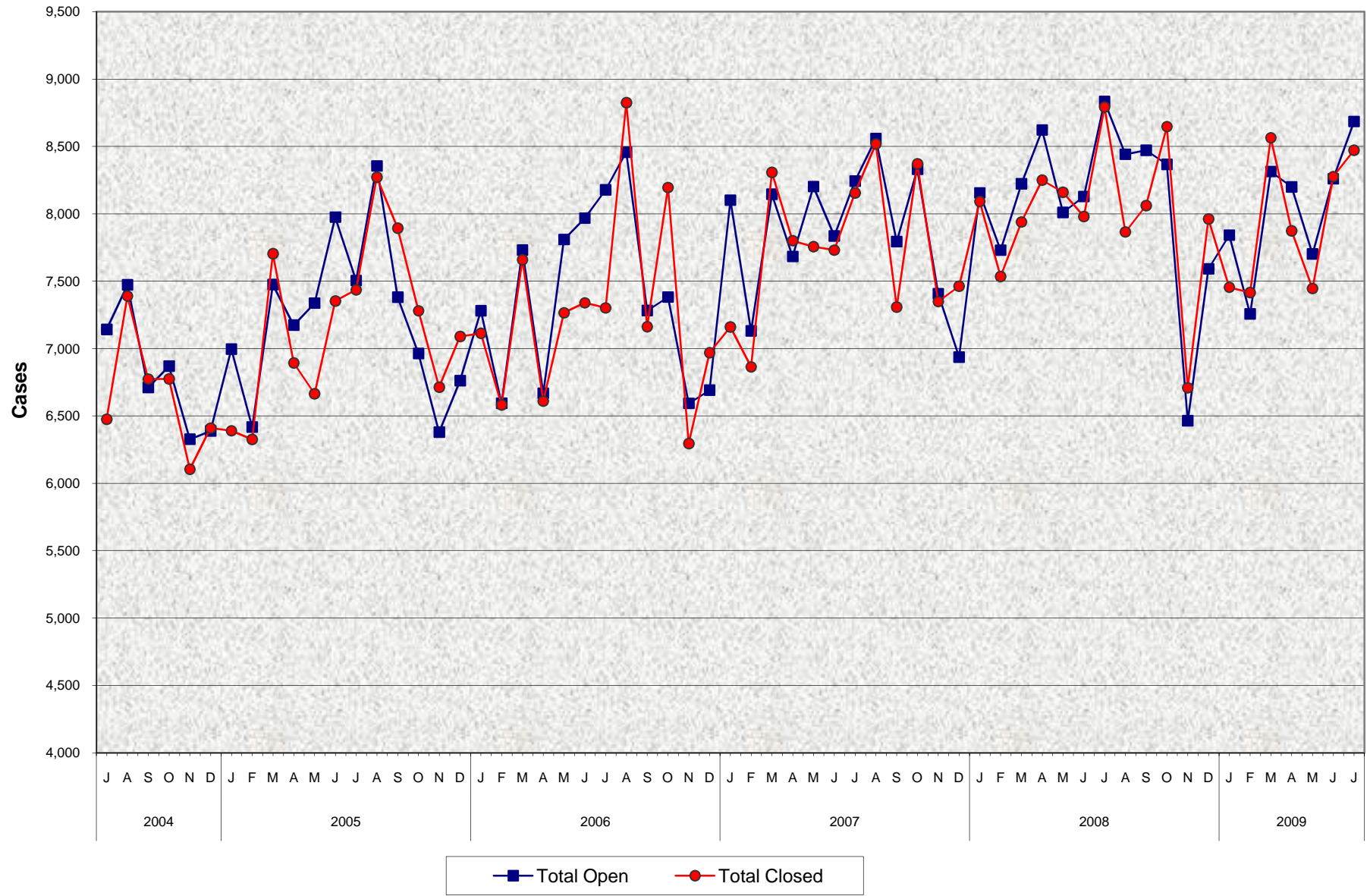


Adult Protective Services (APS) Open and Closed Cases July 2004 - July 2009



**Adult Protective Services (APS)
Open and Closed Cases
July 2004 - July 2009**

MONTHLY PERCENT CHANGE

FY		Jul	% Chg	Aug	% Chg	Sep	% Chg	Oct	% Chg	Nov	% Chg	Dec	% Chg	Jan	% Chg	Feb	% Chg	Mar	% Chg	Apr	% Chg	May	% Chg	Jun	% Chg
04/05	Open	7,141	-1.4%	7,472	4.6%	6,710	-10.2%	6,869	2.4%	6,326	-7.9%	6,387	1.0%	6,995	9.5%	6,417	-8.3%	7,474	16.5%	7,173	-4.0%	7,336	2.3%	7,974	8.7%
	Closed	6,475	-11.7%	7,389	14.1%	6,773	-8.3%	6,774	0.0%	6,103	-9.9%	6,409	5.0%	6,389	-0.3%	6,325	-1.0%	7,704	21.8%	6,893	-10.5%	6,664	-3.3%	7,352	10.3%
05/06	Open	7,504	-5.9%	8,354	11.3%	7,381	-11.6%	6,962	-5.7%	6,379	-8.4%	6,760	6.0%	7,280	7.7%	6,593	-9.4%	7,730	17.3%	6,667	-13.8%	7,808	17.1%	7,967	2.0%
	Closed	7,435	1.1%	8,271	11.2%	7,893	-4.6%	7,279	-7.8%	6,712	-7.8%	7,089	5.6%	7,113	0.3%	6,581	-7.5%	7,659	16.4%	6,609	-13.7%	7,265	9.9%	7,339	1.0%
06/07	Open	8,177	2.6%	8,456	3.4%	7,281	-13.9%	7,381	1.4%	6,592	-10.7%	6,690	1.5%	8,100	21.1%	7,130	-12.0%	8,144	14.2%	7,682	-5.7%	8,201	6.8%	7,835	-4.5%
	Closed	7,301	-0.5%	8,825	20.9%	7,161	-18.9%	8,195	14.4%	6,294	-23.2%	6,968	10.7%	7,159	2.7%	6,863	-4.1%	8,308	21.1%	7,800	-6.1%	7,756	-0.6%	7,730	-0.3%
07/08	Open	8,242	5.2%	8,558	3.8%	7,793	-8.9%	8,330	6.9%	7,406	-11.1%	6,936	-6.3%	8,154	17.6%	7,729	-5.2%	8,222	6.4%	8,621	4.9%	8,010	-7.1%	8,127	1.5%
	Closed	8,154	5.5%	8,518	4.5%	7,307	-14.2%	8,370	14.5%	7,348	-12.2%	7,462	1.6%	8,091	8.4%	7,534	-6.9%	7,939	5.4%	8,250	3.9%	8,160	-1.1%	7,980	-2.2%
08/09	Open	8,833	8.7%	8,441	-4.4%	8,471	0.4%	8,366	-1.2%	6,464	-22.7%	7,590	17.4%	7,841	3.3%	7,256	-7.5%	8,313	14.6%	8,199	-1.4%	-7,701	-6.1%	8,259	7.2%
	Closed	8,792	10.2%	7,865	-10.5%	8,060	2.5%	8,647	7.3%	6,708	-22.4%	7,961	18.7%	7,454	-6.4%	7,415	-0.5%	8,564	15.5%	7,873	-8.1%	7,445	-5.4%	8,276	11.2%
09/10	Open	8,684	5.1%																						
	Closed	8,471	2.4%																						

TRENDS

- **Cases Opened increased 5.1% between June 2009 and July 2009**
6.5% increase in Elder cases
2.4% increase in Dependent Adult cases
- **Cases Opened decreased -1.7% between July 2008 and July 2009**
0.4% increase in Elder cases
-5.7% decrease in Dependent Adult cases
- **Cases Closed increased 2.4% between June 2009 and July 2009**
2.9% increase in Elder cases
1.2% increase in Dependent Adult cases
- **Cases Closed decreased -3.7% between July 2008 and July 2009**
-4.0% decrease in Elder cases
-2.9% decrease in Dependent Adult cases