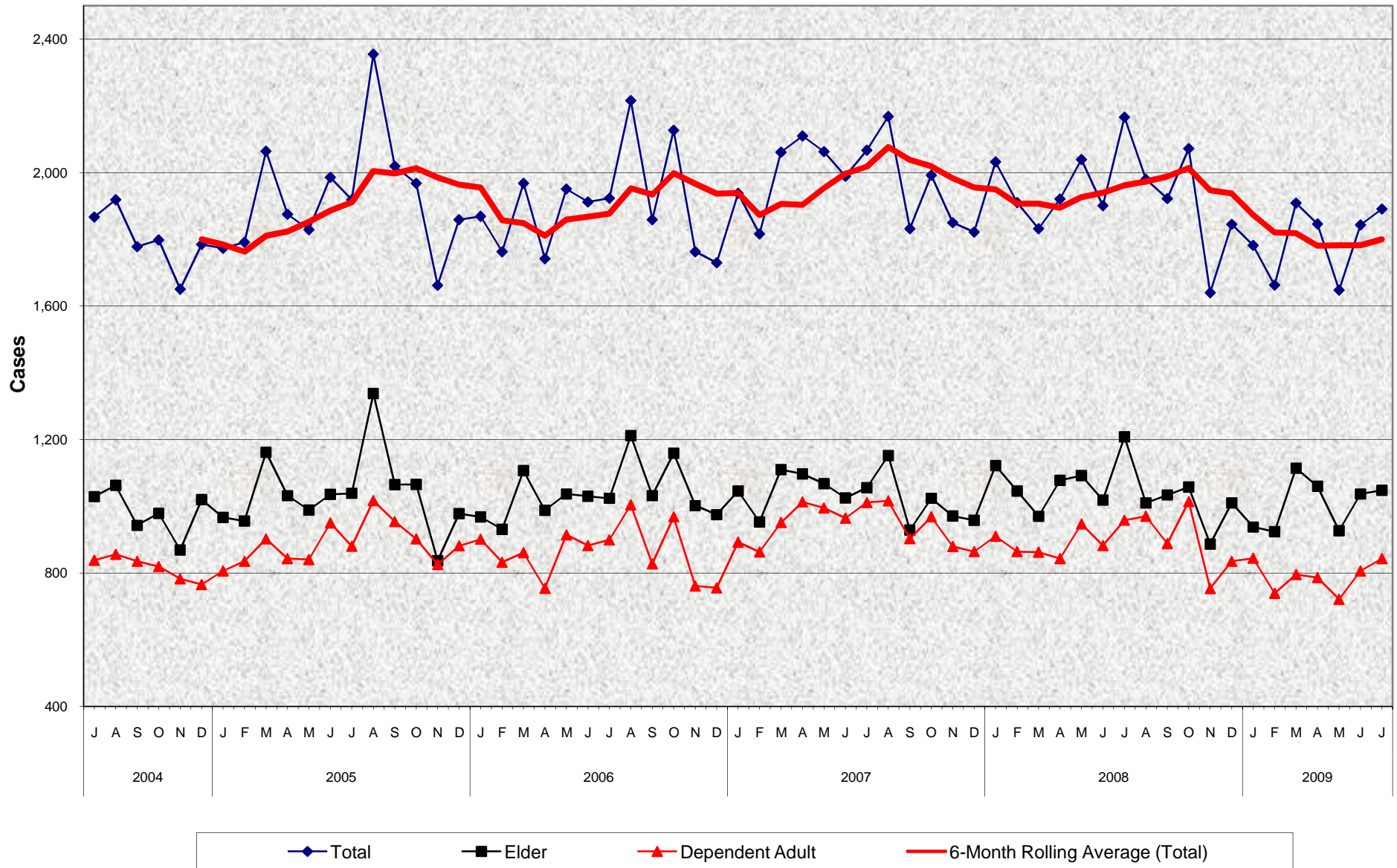


Adult Protective Services (APS) Confirmed Self Neglect Abuse Cases July 2004 - July 2009



Adult Protective Services (APS) Confirmed Self Neglect Abuse Cases July 2004 - July 2009

MONTHLY PERCENT CHANGE

FY		Jul	% Chg	Aug	% Chg	Sep	% Chg	Oct	% Chg	Nov	% Chg	Dec	% Chg	Jan	% Chg	Feb	% Chg	Mar	% Chg	Apr	% Chg	May	% Chg	Jun	% Chg
04/05	Total	1,867	-7.3%	1,919	2.8%	1,778	-7.3%	1,798	1.1%	1,651	-8.2%	1,785	8.1%	1,773	-0.7%	1,791	1.0%	2,064	15.2%	1,875	-9.2%	1,829	-2.5%	1,986	8.6%
	Elder	1,029	-9.0%	1,063	3.3%	943	-11.3%	979	3.8%	869	-11.2%	1,020	17.4%	967	-5.2%	956	-1.1%	1,162	21.5%	1,032	-11.2%	989	-4.2%	1,036	4.8%
	Dep. Adult	838	-5.1%	856	2.1%	835	-2.5%	819	-1.9%	782	-4.5%	765	-2.2%	806	5.4%	835	3.6%	902	8.0%	843	-6.5%	840	-0.4%	950	13.1%
05/06	Total	1,919	-3.4%	2,355	22.7%	2,019	-14.3%	1,968	-2.5%	1,662	-15.5%	1,859	11.9%	1,869	0.5%	1,763	-5.7%	1,968	11.6%	1,742	-11.5%	1,951	12.0%	1,912	-2.0%
	Elder	1,039	0.3%	1,338	28.8%	1,065	-20.4%	1,066	0.1%	837	-21.5%	978	16.8%	968	-1.0%	931	-3.8%	1,107	18.9%	988	-10.7%	1,037	5.0%	1,030	-0.7%
	Dep. Adult	880	-7.4%	1,017	15.6%	954	-6.2%	902	-5.5%	825	-8.5%	881	6.8%	901	2.3%	832	-7.7%	861	3.5%	754	-12.4%	914	21.2%	882	-3.5%
06/07	Total	1,923	0.6%	2,216	15.2%	1,859	-16.1%	2,127	14.4%	1,763	-17.1%	1,730	-1.9%	1,938	12.0%	1,816	-6.3%	2,061	13.5%	2,110	2.4%	2,063	-2.2%	1,989	-3.6%
	Elder	1,024	-0.6%	1,212	18.4%	1,032	-14.9%	1,159	12.3%	1,002	-13.5%	975	-2.7%	1,046	7.3%	953	-8.9%	1,110	16.5%	1,097	-1.2%	1,068	-2.6%	1,025	-4.0%
	Dep. Adult	899	1.9%	1,004	11.7%	827	-17.6%	968	17.0%	761	-21.4%	755	-0.8%	892	18.1%	863	-3.3%	951	10.2%	1,013	6.5%	995	-1.8%	964	-3.1%
07/08	Total	2,067	3.9%	2,168	4.9%	1,832	-15.5%	1,992	8.7%	1,850	-7.1%	1,822	-1.5%	2,032	11.5%	1,910	-6.0%	1,832	-4.1%	1,921	4.9%	2,039	6.1%	1,901	-6.8%
	Elder	1,056	3.0%	1,152	9.1%	929	-19.4%	1,024	10.2%	971	-5.2%	958	-1.3%	1,122	17.1%	1,046	-6.8%	970	-7.3%	1,078	11.1%	1,092	1.3%	1,019	-6.7%
	Dep. Adult	1,011	4.9%	1,016	0.5%	903	-11.1%	968	7.2%	879	-9.2%	864	-1.7%	910	5.3%	864	-5.1%	862	-0.2%	843	-2.2%	947	12.3%	882	-6.9%
08/09	Total	2,166	13.9%	1,980	-8.6%	1,922	-2.9%	2,072	7.8%	1,640	-20.8%	1,845	12.5%	1,782	-3.4%	1,663	-6.7%	1,909	14.8%	1,846	-3.3%	1,648	-10.7%	1,843	11.8%
	Elder	1,208	18.5%	1,010	-16.4%	1,034	2.4%	1,058	2.3%	887	-16.2%	1,010	13.9%	938	-7.1%	924	-1.5%	1,114	20.6%	1,060	-4.8%	927	-12.5%	1,037	11.9%
	Dep. Adult	958	8.6%	970	1.3%	888	-8.5%	1,014	14.2%	753	-25.7%	835	10.9%	844	1.1%	739	-12.4%	795	7.6%	786	-1.1%	721	-8.3%	806	11.8%
09/10	Total	1,891	2.6%																						
	Elder	1,048	1.1%																						
	Dep. Adult	843	4.6%																						

TRENDS

- **Total number of Self Neglect cases increased 2.6% between June 2009 and July 2009**
1.1% increase in Elder cases
4.6% increase in Dependent Adult cases
- **Total number of Self Neglect cases decreased -12.7% between July 2008 and July 2009**
-13.2% decrease in Elder cases
-12.0% decrease in Dependent Adult cases