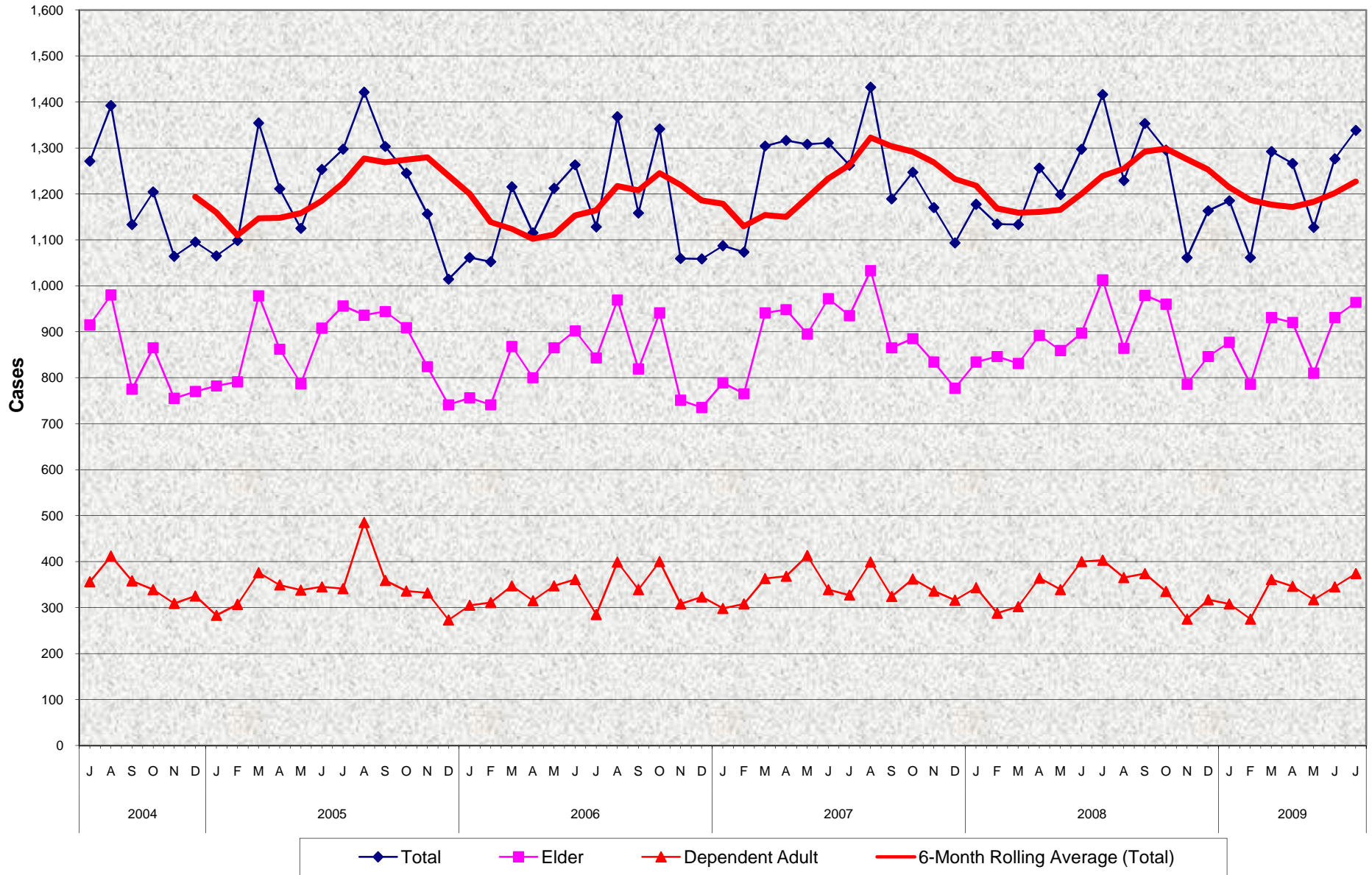


### Adult Protective Services (APS) Confirmed Abuse Perpetrated By Others Cases July 2004 - July 2009



## Adult Protective Services (APS) Confirmed Abuse Perpetrated By Others Cases July 2004 - July 2009

### MONTHLY PERCENT CHANGE

FY		Jul	% Chg	Aug	% Chg	Sep	% Chg	Oct	% Chg	Nov	% Chg	Dec	% Chg	Jan	% Chg	Feb	% Chg	Mar	% Chg	Apr	% Chg	May	% Chg	Jun	% Chg
04/05	Total	1,271	-5.1%	1,392	9.5%	1,133	-18.6%	1,204	6.3%	1,064	-11.6%	1,095	2.9%	1,065	-2.7%	1,098	3.1%	1,354	23.3%	1,211	-10.6%	1,125	-7.1%	1,253	11.4%
	Elder	915	-6.0%	980	7.1%	775	-20.9%	865	11.6%	755	-12.7%	770	2.0%	782	1.6%	791	1.2%	978	23.6%	862	-11.9%	787	-8.7%	908	15.4%
	Dep. Adult	356	-2.7%	412	15.7%	358	-13.1%	339	-5.3%	309	-8.8%	325	5.2%	283	-12.9%	307	8.5%	376	22.5%	349	-7.2%	338	-3.2%	345	2.1%
05/06	Total	1,297	3.5%	1,421	9.6%	1,303	-8.3%	1,245	-4.5%	1,156	-7.1%	1,014	-12.3%	1,061	4.6%	1,052	-0.8%	1,215	15.5%	1,115	-8.2%	1,212	8.7%	1,263	4.2%
	Elder	956	5.3%	936	-2.1%	944	0.9%	909	-3.7%	824	-9.4%	741	-10.1%	756	2.0%	741	-2.0%	868	17.1%	800	-7.8%	865	8.1%	902	4.3%
	Dep. Adult	341	-1.2%	485	42.2%	359	-26.0%	336	-6.4%	332	-1.2%	273	-17.8%	305	11.7%	311	2.0%	347	11.6%	315	-9.2%	347	10.2%	361	4.0%
06/07	Total	1,128	-10.7%	1,368	21.3%	1,158	-15.4%	1,341	15.8%	1,059	-21.0%	1,058	-0.1%	1,087	2.7%	1,073	-1.3%	1,304	21.5%	1,316	0.9%	1,308	-0.6%	1,311	0.2%
	Elder	843	-6.5%	969	14.9%	819	-15.5%	941	14.9%	751	-20.2%	735	-2.1%	789	7.3%	765	-3.0%	941	23.0%	948	0.7%	895	-5.6%	972	8.6%
	Dep. Adult	285	-21.1%	399	40.0%	339	-15.0%	400	18.0%	308	-23.0%	323	4.9%	298	-7.7%	308	3.4%	363	17.9%	368	1.4%	413	12.2%	339	-17.9%
07/08	Total	1,262	-3.7%	1,432	13.5%	1,189	-17.0%	1,247	4.9%	1,170	-6.2%	1,093	-6.6%	1,177	7.7%	1,134	-3.7%	1,133	-0.1%	1,256	10.9%	1,198	-4.6%	1,297	8.3%
	Elder	935	-3.8%	1,033	10.5%	865	-16.3%	885	2.3%	834	-5.8%	777	-6.8%	834	7.3%	846	1.4%	831	-1.8%	892	7.3%	859	-3.7%	897	4.4%
	Dep. Adult	327	-3.5%	399	22.0%	324	-18.8%	362	11.7%	336	-7.2%	316	-6.0%	343	8.5%	288	-16.0%	302	4.9%	364	20.5%	339	-6.9%	400	18.0%
08/09	Total	1,416	9.2%	1,229	-13.2%	1,353	10.1%	1,295	-4.3%	1,061	-18.1%	1,163	9.6%	1,185	1.9%	1,061	-10.5%	1,292	21.8%	1,266	-2.0%	1,127	-11.0%	1,276	13.2%
	Elder	1,013	12.9%	864	-14.7%	979	13.3%	960	-1.9%	786	-18.1%	846	7.6%	877	3.7%	786	-10.4%	931	18.4%	920	-1.2%	810	-12.0%	931	14.9%
	Dep. Adult	403	0.8%	365	-9.4%	374	2.5%	335	-10.4%	275	-17.9%	317	15.3%	308	-2.8%	275	-10.7%	361	31.3%	346	-4.2%	317	-8.4%	345	8.8%
09/10	Total	1,338	4.9%																						
	Elder	964	3.5%																						
	Dep. Adult	374	8.4%																						

### TRENDS

- **Total Number of Abuse Perpetrated By Others cases increased 4.9% between June 2009 and July 2009**  
3.5% increase in Elder cases  
8.4% increase in Dependent Adult cases
- **Total Number of Abuse Perpetrated By Others cases decreased -5.5% between July 2008 and July 2009**  
-4.8% decrease in Elder cases  
-7.2% decrease in Dependent Adult cases