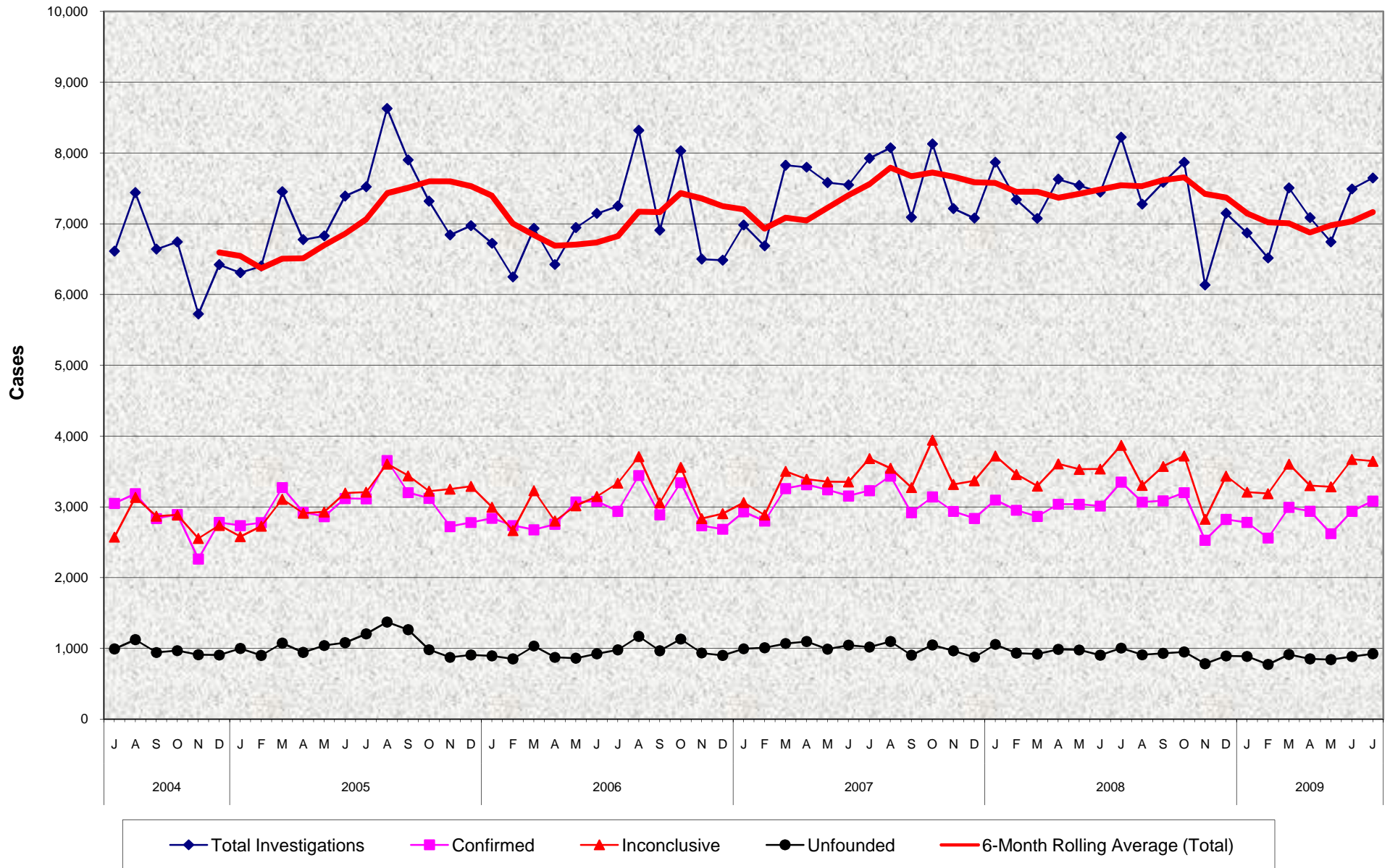


### Adult Protective Services (APS) Completed Investigations July 2004 - July 2009



### Adult Protective Services (APS) Completed Investigations July 2004 - July 2009

#### MONTHLY PERCENT CHANGE

FY		Jul	% Chg	Aug	% Chg	Sep	% Chg	Oct	% Chg	Nov	% Chg	Dec	% Chg	Jan	% Chg	Feb	% Chg	Mar	% Chg	Apr	% Chg	May	% Chg	Jun	% Chg
04/05	Total	6,610	-8.5%	7,439	12.5%	6,640	-10.7%	6,742	1.5%	5,722	-15.1%	6,420	12.2%	6,307	-1.8%	6,400	1.5%	7,451	16.4%	6,774	-9.1%	6,827	0.8%	7,390	8.2%
	Confirmed	3,048	-5.0%	3,184	4.5%	2,832	-11.1%	2,891	2.1%	2,260	-21.8%	2,778	22.9%	2,733	-1.6%	2,775	1.5%	3,272	17.9%	2,923	-10.7%	2,861	-2.1%	3,116	8.9%
	Inconclusive	2,570	-14.4%	3,133	21.9%	2,867	-8.5%	2,884	0.6%	2,552	-11.5%	2,737	7.2%	2,577	-5.8%	2,726	5.8%	3,107	14.0%	2,909	-6.4%	2,927	0.6%	3,194	9.1%
	Unfounded	992	-2.5%	1,122	13.1%	941	-16.1%	967	2.8%	910	-5.9%	905	-0.5%	997	10.2%	899	-9.8%	1,072	19.2%	942	-12.1%	1,039	10.3%	1,080	3.9%
05/06	Total	7,522	1.8%	8,629	14.7%	7,901	-8.4%	7,318	-7.4%	6,841	-6.5%	6,972	1.9%	6,723	-3.6%	6,247	-7.1%	6,933	11.0%	6,422	-7.4%	6,944	8.1%	7,144	2.9%
	Confirmed	3,112	-0.1%	3,654	17.4%	3,200	-12.4%	3,119	-2.5%	2,720	-12.8%	2,777	2.1%	2,836	2.1%	2,734	-3.6%	2,674	-2.2%	2,752	2.9%	3,069	11.5%	3,076	0.2%
	Inconclusive	3,206	0.4%	3,604	12.4%	3,438	-4.6%	3,219	-6.4%	3,249	0.9%	3,288	1.2%	2,993	-9.0%	2,663	-11.0%	3,227	21.2%	2,798	-13.3%	3,015	7.8%	3,145	4.3%
	Unfounded	1,204	11.5%	1,371	13.9%	1,263	-7.9%	980	-22.4%	872	-11.0%	907	4.0%	894	-1.4%	850	-4.9%	1,032	21.4%	872	-15.5%	860	-1.4%	923	7.3%
06/07	Total	7,249	1.5%	8,319	14.8%	6,907	-17.0%	8,028	16.2%	6,498	-19.1%	6,484	-0.2%	6,981	7.7%	6,686	-4.2%	7,826	17.1%	7,798	-0.4%	7,580	-2.8%	7,548	-0.4%
	Confirmed	2,936	-4.6%	3,442	17.2%	2,886	-16.2%	3,341	15.8%	2,731	-18.3%	2,682	-1.8%	2,928	9.2%	2,796	-4.5%	3,257	16.5%	3,313	1.7%	3,240	-2.2%	3,152	-2.7%
	Inconclusive	3,334	6.0%	3,709	11.2%	3,055	-17.6%	3,557	16.4%	2,833	-20.4%	2,902	2.4%	3,060	5.4%	2,883	-5.8%	3,501	21.4%	3,390	-3.2%	3,352	-1.1%	3,351	0.0%
	Unfounded	979	6.1%	1,168	19.3%	966	-17.3%	1,130	17.0%	934	-17.3%	900	-3.6%	993	10.3%	1,007	1.4%	1,068	6.1%	1,095	2.5%	988	-9.8%	1,045	5.8%
07/08	Total	7,925	5.0%	8,073	1.9%	7,090	-12.2%	8,127	14.6%	7,214	-11.2%	7,078	-1.9%	7,868	11.2%	7,339	-6.7%	7,074	-3.6%	7,628	7.8%	7,540	-1.2%	7,447	-1.2%
	Confirmed	3,227	2.4%	3,434	6.4%	2,916	-15.1%	3,138	7.6%	2,934	-6.5%	2,835	-3.4%	3,095	9.2%	2,950	-4.7%	2,863	-2.9%	3,036	6.0%	3,034	-0.1%	3,010	-0.8%
	Inconclusive	3,681	9.8%	3,543	-3.7%	3,271	-7.7%	3,942	20.5%	3,315	-15.9%	3,368	1.6%	3,718	10.4%	3,457	-7.0%	3,291	-4.8%	3,606	9.6%	3,529	-2.1%	3,533	0.1%
	Unfounded	1,017	-2.7%	1,096	7.8%	903	-17.6%	1,047	15.9%	965	-7.8%	875	-9.3%	1,055	20.6%	932	-11.7%	920	-1.3%	986	7.2%	977	-0.9%	904	-7.5%
08/09	Total	8,221	10.4%	7,275	-11.5%	7,583	4.2%	7,867	3.7%	6,133	-22.0%	7,147	16.5%	6,869	-3.9%	6,514	-5.2%	7,506	15.2%	7,084	-5.6%	6,742	-4.8%	7,490	11.1%
	Confirmed	3,348	11.2%	3,065	-8.5%	3,083	0.6%	3,200	3.8%	2,527	-21.0%	2,821	11.6%	2,778	-1.5%	2,557	-8.0%	2,991	17.0%	2,936	-1.8%	2,620	-10.8%	2,936	12.1%
	Inconclusive	3,870	9.5%	3,302	-14.7%	3,570	8.1%	3,719	4.2%	2,823	-24.1%	3,434	21.6%	3,206	-6.6%	3,185	-0.7%	3,602	13.1%	3,298	-8.4%	3,281	-0.5%	3,670	11.9%
	Unfounded	1,003	11.0%	908	-9.5%	930	2.4%	948	1.9%	783	-17.4%	892	13.9%	885	-0.8%	772	-12.8%	913	18.3%	850	-6.9%	841	-1.1%	884	5.1%
09/10	Total	7,646	2.1%																						
	Confirmed	3,080	4.9%																						
	Inconclusive	3,644	-0.7%																						
	Unfounded	922	4.3%																						

#### TRENDS

- **Completed Investigations increased 2.1% between June 2009 and July 2009**  
 4.9% increase in Confirmed cases  
 -0.7% decrease in Inconclusive cases  
 4.3% increase in Unfounded cases
- **Completed Investigations decreased -7.0% between July 2008 and July 2009**  
 -8.0% decrease in Confirmed cases  
 -5.8% decrease in Inconclusive cases  
 -8.1% decrease in Unfounded cases