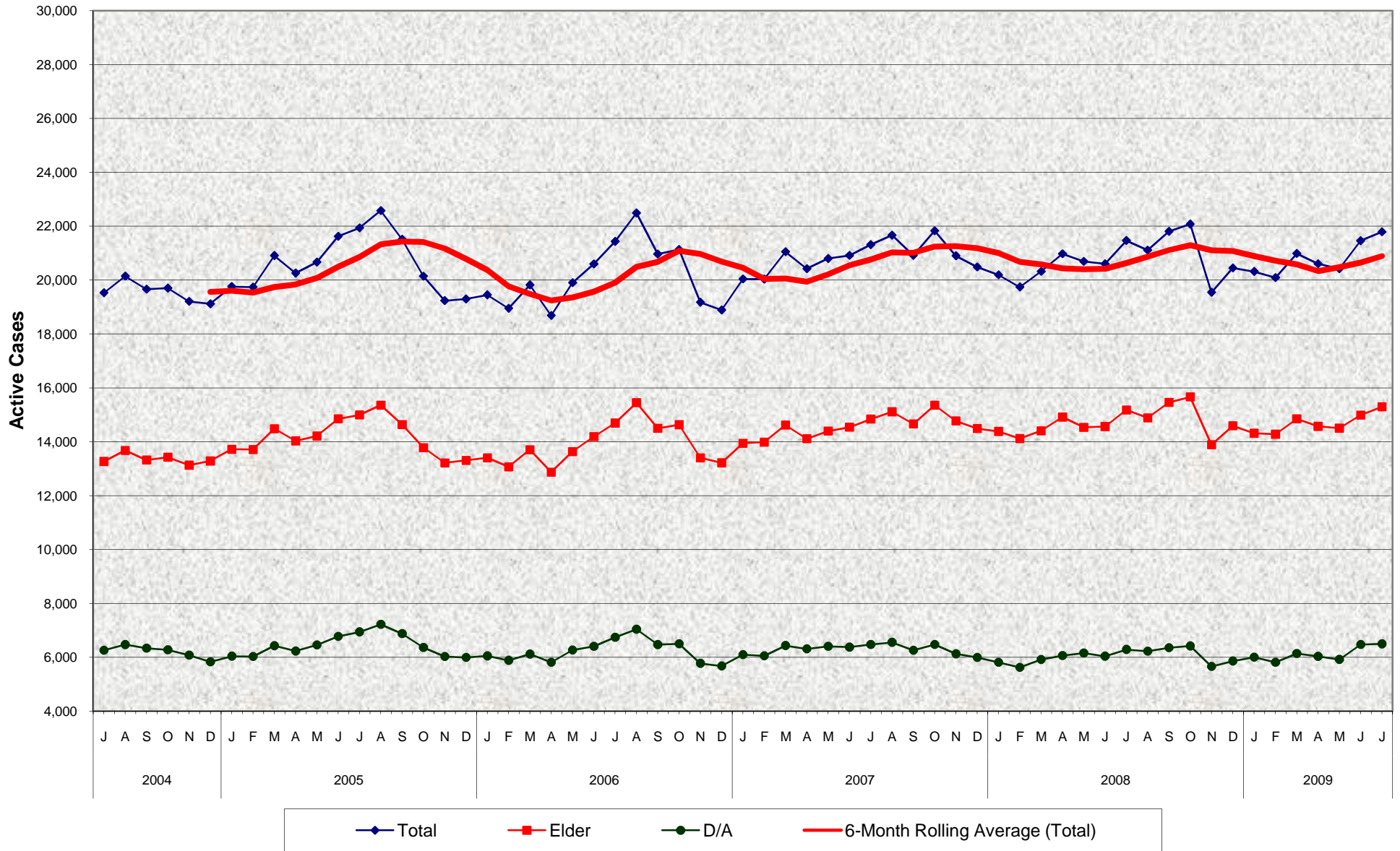


Adult Protective Services (APS) Active Cases July 2004 - July 2009



Adult Protective Services (APS) Active Cases July 2004 - July 2009

MONTHLY PERCENT CHANGE

FY		Jul	% Chg	Aug	% Chg	Sep	% Chg	Oct	% Chg	Nov	% Chg	Dec	% Chg	Jan	% Chg	Feb	% Chg	Mar	% Chg	Apr	% Chg	May	% Chg	Jun	% Chg
04/05	Total	19,528	-0.9%	20,145	3.2%	19,660	-2.4%	19,700	0.2%	19,207	-2.5%	19,117	-0.5%	19,757	3.3%	19,739	-0.1%	20,908	5.9%	20,259	-3.1%	20,666	2.0%	21,623	4.6%
	Elder	13,269	-1.2%	13,675	3.1%	13,322	-2.6%	13,425	0.8%	13,130	-2.2%	13,285	1.2%	13,718	3.3%	13,710	-0.1%	14,481	5.6%	14,030	-3.1%	14,210	1.3%	14,846	4.5%
	Dep, Adult	6,259	-0.4%	6,470	3.4%	6,338	-2.0%	6,275	-1.0%	6,077	-3.2%	5,832	-4.0%	6,039	3.5%	6,029	-0.2%	6,427	6.6%	6,229	-3.1%	6,456	3.6%	6,777	5.0%
05/06	Total	21,935	1.4%	22,576	2.9%	21,514	-4.7%	20,142	-6.4%	19,236	-4.5%	19,298	0.3%	19,449	0.8%	18,950	-2.6%	19,819	4.6%	18,684	-5.7%	19,900	6.5%	20,595	3.5%
	Elder	14,994	1.0%	15,356	2.4%	14,635	-4.7%	13,780	-5.8%	13,212	-4.1%	13,307	0.7%	13,400	0.7%	13,066	-2.5%	13,701	4.9%	12,872	-6.1%	13,632	5.9%	14,188	4.1%
	Dep, Adult	6,941	2.4%	7,220	4.0%	6,879	-4.7%	6,362	-7.5%	6,024	-5.3%	5,991	-0.5%	6,049	1.0%	5,884	-2.7%	6,118	4.0%	5,812	-5.0%	6,268	7.8%	6,407	2.2%
06/07	Total	21,431	4.1%	22,489	4.9%	20,965	-6.8%	21,132	0.8%	19,174	-9.3%	18,888	-1.5%	20,038	6.1%	20,036	0.0%	21,051	5.1%	20,422	-3.0%	20,798	1.8%	20,914	0.6%
	Elder	14,689	3.5%	15,446	5.2%	14,495	-6.2%	14,631	0.9%	13,400	-8.4%	13,216	-1.4%	13,942	5.5%	13,985	0.3%	14,617	4.5%	14,111	-3.5%	14,394	2.0%	14,539	1.0%
	Dep, Adult	6,742	5.2%	7,043	4.5%	6,470	-8.1%	6,501	0.5%	5,774	-11.2%	5,672	-1.8%	6,096	7.5%	6,051	-0.7%	6,434	6.3%	6,311	-1.9%	6,404	1.5%	6,375	-0.5%
07/08	Total	21,313	1.9%	21,664	1.6%	20,917	-3.4%	21,827	4.4%	20,898	-4.3%	20,484	-2.0%	20,191	-1.4%	19,741	-2.2%	20,320	2.9%	20,973	3.2%	20,689	-1.4%	20,601	-0.4%
	Elder	14,838	2.1%	15,110	1.8%	14,658	-3.0%	15,352	4.7%	14,772	-3.8%	14,489	-1.9%	14,381	-0.7%	14,117	-1.8%	14,405	2.0%	14,914	3.5%	14,533	-2.6%	14,561	0.2%
	Dep, Adult	6,475	1.6%	6,554	1.2%	6,259	-4.5%	6,475	3.5%	6,126	-5.4%	5,995	-2.1%	5,810	-3.1%	5,624	-3.2%	5,915	5.2%	6,059	2.4%	6,156	1.6%	6,040	-1.9%
08/09	Total	21,464	4.2%	21,110	-1.6%	21,806	3.3%	22,078	1.2%	19,545	-11.5%	20,448	4.6%	20,315	-0.7%	20,090	-1.1%	20,984	4.4%	20,603	-1.8%	20,422	-0.9%	21,459	5.1%
	Elder	15,176	4.2%	14,885	-1.9%	15,454	3.8%	15,660	1.3%	13,887	-11.3%	14,590	5.1%	14,314	-1.9%	14,278	-0.3%	14,847	4.0%	14,571	-1.9%	14,503	-0.5%	14,987	3.3%
	Dep, Adult	6,288	4.1%	6,225	-1.0%	6,352	2.0%	6,418	1.0%	5,658	-11.8%	5,858	3.5%	6,001	2.4%	5,812	-3.1%	6,137	5.6%	6,032	-1.7%	5,919	-1.9%	6,472	9.3%
09/10	Total	21,787	1.5%																						
	Elder	15,291	2.0%																						
	Dep, Adult	6,496	0.4%																						

TRENDS

- **Active Cases increased 1.5% between June 2009 and July 2009**
2.0% increase in Elder Cases
0.4% increase in Dependent Adult Cases
- **Active Cases increased 1.5% between July 2008 and July 2009**
0.8% increase in Elder Cases
3.3% increase in Dependent Adult Cases