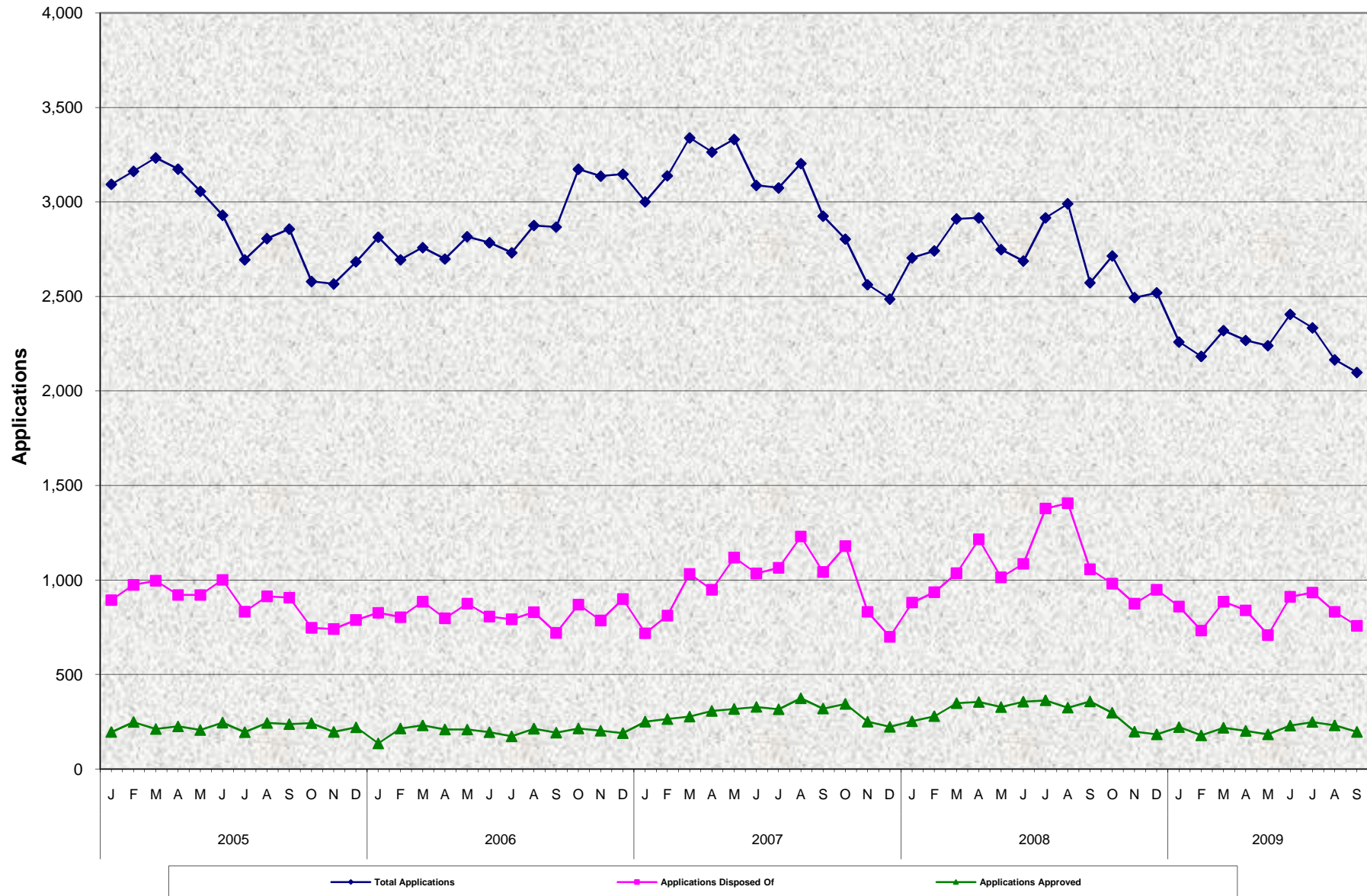


Cash Assistance Program for Immigrants (CAPI) Total Applications, Applications Disposed Of^{a/} and Applications Approved January 2005 - September 2009



^{a/} Applications approved, restored, denied/withdrawn, other approvals.
 Source: CA 1037

Cash Assistance Program for Immigrants (CAPI) Total Applications, Applications Disposed Of ^{a/} and Applications Approved January 2005 - September 2009

MONTHLY PERCENT CHANGE

		Jul	% Chg	Aug	% Chg	Sep	% Chg	Oct	% Chg	Nov	% Chg	Dec	% Chg	Jan	% Chg	Feb	% Chg	Mar	% Chg	Apr	% Chg	May	% Chg	Jun	% Chg
04/05	Total Apps.											3,181		3,093	-2.8%	3,162	2.2%	3,233	2.2%	3,174	-1.8%	3,056	-3.7%	2,930	-4.1%
	Apps. Disp. Of											873		894	2.4%	974	8.9%	996	2.3%	921	-7.5%	921	0.0%	1,001	8.7%
	Apps. Appvd.											231		196	-15.2%	251	28.1%	213	-15.1%	231	8.5%	207	-10.4%	246	18.8%
05/06	Total Apps.	2,694	-8.1%	2,806	4.2%	2,856	1.8%	2,579	-9.7%	2,492	-3.4%	2,609	4.7%	2,739	5.0%	2,694	-1.6%	2,684	-0.4%	2,698	0.5%	2,816	4.4%	2,784	-1.1%
	Apps. Disp. Of	833	-16.8%	914	9.7%	907	-0.8%	748	-17.5%	691	-7.6%	739	6.9%	777	5.1%	804	3.5%	836	4.0%	798	-4.5%	875	9.6%	807	-7.8%
	Apps. Appvd.	195	-20.7%	244	25.1%	238	-2.5%	243	2.1%	179	-26.3%	203	13.4%	118	-41.9%	215	82.2%	213	-0.9%	210	-1.4%	209	-0.5%	195	-6.7%
06/07	Total Apps.	2,731	-1.9%	2,875	5.3%	2,867	-0.3%	3,173	10.7%	3,136	-1.2%	3,147	0.4%	3,001	-4.6%	3,138	4.6%	3,339	6.4%	3,264	-2.2%	3,331	2.1%	3,087	-7.3%
	Apps. Disp. Of	793	-1.7%	830	4.7%	721	-13.1%	870	20.7%	786	-9.7%	900	14.5%	719	-20.1%	812	12.9%	1,032	27.1%	949	-8.0%	1,119	17.9%	1,035	-7.5%
	Apps. Appvd.	174	-10.8%	214	23.0%	193	-9.8%	215	11.4%	203	-5.6%	190	-6.4%	251	32.1%	265	5.6%	278	4.9%	308	10.8%	318	3.2%	329	3.5%
07/08	Total Apps.	3,074	-0.4%	3,203	4.2%	2,925	-8.7%	2,803	-4.2%	2,562	-8.6%	2,486	-3.0%	2,704	8.8%	2,741	1.4%	2,910	6.2%	2,916	0.2%	2,748	-5.8%	2,687	-2.2%
	Apps. Disp. Of	1,065	2.9%	1,230	15.5%	1,043	-15.2%	1,179	13.0%	832	-29.4%	700	-15.9%	881	25.9%	936	6.2%	1,036	10.7%	1,215	17.3%	1,014	-16.5%	1,086	7.1%
	Apps. Appvd.	317	-3.6%	375	18.3%	320	-14.7%	345	7.8%	251	-27.2%	224	-10.8%	253	12.9%	280	10.7%	349	24.6%	355	1.7%	328	-7.6%	357	8.8%
08/09	Total Apps.	2,916	8.5%	2,990	2.5%	2,572	-14.0%	2,714	5.5%	2,493	-8.1%	2,519	1.0%	2,259	-10.3%	2,182	-3.4%	2,319	6.3%	2,267	-2.2%	2,239	-1.2%	2,405	7.4%
	Apps. Disp. Of	1,378	26.9%	1,406	2.0%	1,057	-24.8%	981	-7.2%	875	-10.8%	949	8.5%	860	-9.4%	733	-14.8%	886	20.9%	840	-5.2%	709	-15.6%	911	28.5%
	Apps. Appvd.	364	2.0%	325	-10.7%	358	10.2%	298	-16.8%	198	-33.6%	184	-7.1%	222	20.7%	178	-19.8%	219	23.0%	202	-7.8%	184	-8.9%	230	25.0%
09/10	Total Apps.	2,333	-3.0%	2,164	-7.2%	2,097	-3.1%																		
	Apps. Disp. Of	934	2.5%	832	-10.9%	758	-8.9%																		
	Apps. Appvd.	249	8.3%	231	-7.2%	197	-14.7%																		

TRENDS

- **Total Applications:**

The number of applications decreased by 3.1% between August 2009 and September 2009

The number of applications decreased by 18.5% from September 2008 to September 2009

- **Applications Disposed Of:**

The number of applications disposed of decreased by 8.9% between August 2009 and September 2009

The number of applications disposed of decreased by 28.3% from September 2008 to September 2009

- **Applications Approved:**

The number of applications approved decreased by 14.7% between August 2009 and September 2009

The number of applications approved decreased by 45.0% from September 2008 to September 2009