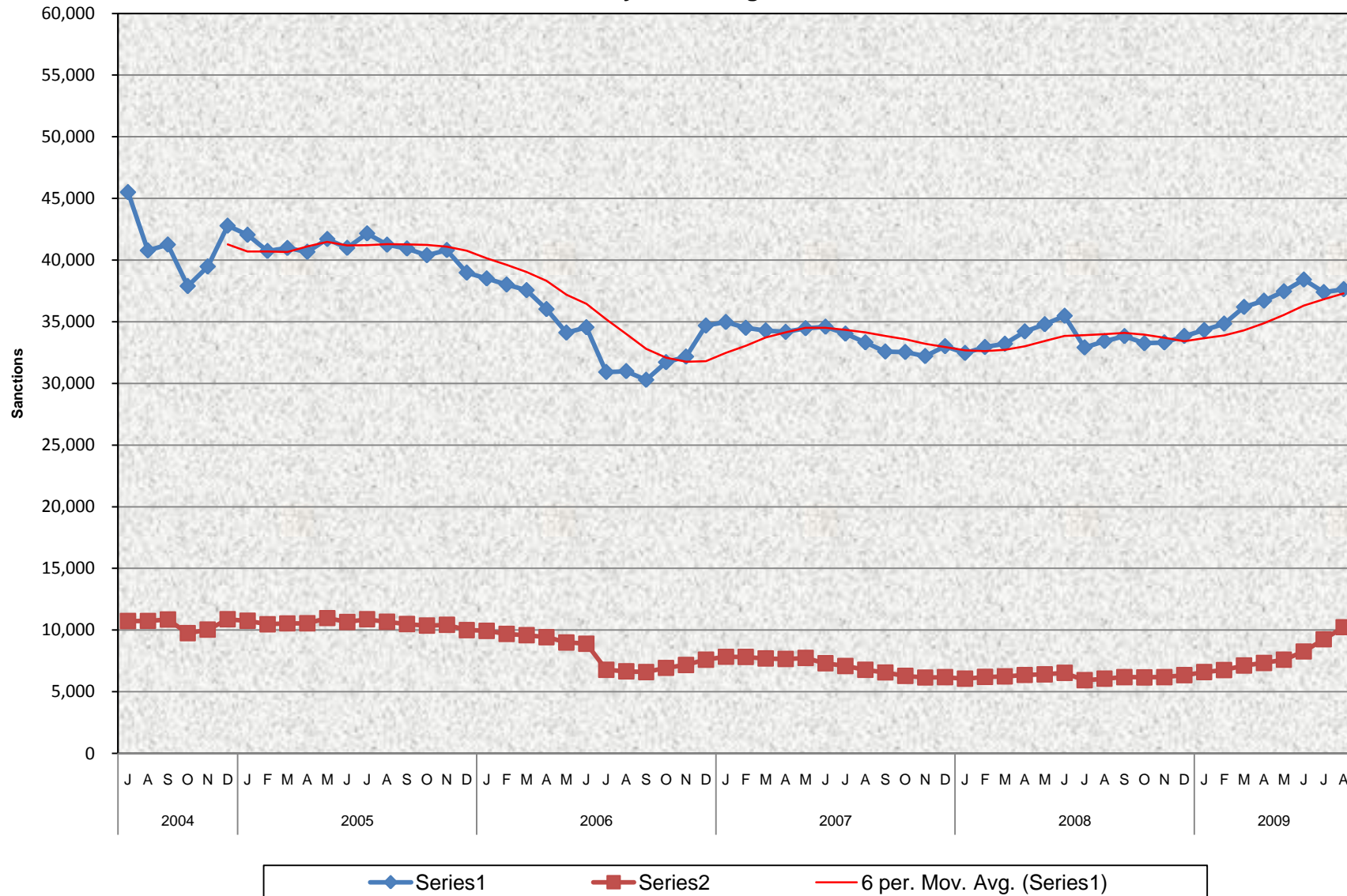


CalWORKs Welfare-to-Work Program Two-Parent and One-Parent^{a/} Sanctions July 2004 - August 2009



a/ One-Person also known as All Other
 Source: WTW 25 and WTW 25A

**CalWORKs Welfare-to-Work Program
Two-Parent and One-Parent^{a/} Sanctions
July 2004 - August 2009**

MONTHLY PERCENT CHANGE

FY		Jul	% Chg	Aug	% Chg	Sep	% Chg	Oct	% Chg	Nov	% Chg	Dec	% Chg	Jan	% Chg	Feb	% Chg	Mar	% Chg	Apr	% Chg	May	% Chg	Jun	% Chg	
04/05	Total	56,236	#REF!	51,521	-8.4%	52,104	1.1%	47,638	-8.6%	49,503	3.9%	53,658	8.4%	52,794	-1.6%	51,201	-3.0%	51,517	0.6%	51,214	-0.6%	52,670	2.8%	51,645	-1.9%	
	1 Parent	45,503	#REF!	40,777	-10.4%	41,253	1.2%	37,888	-8.2%	39,472	4.2%	42,781	8.4%	42,046	-1.7%	40,732	-3.1%	40,977	0.6%	40,666	-0.8%	41,700	2.5%	40,986	-1.7%	
	2 Parent	10,733	#REF!	10,744	0.1%	10,851	1.0%	9,750	-10.1%	10,031	2.9%	10,877	8.4%	10,748	-1.2%	10,469	-2.6%	10,540	0.7%	10,548	0.1%	10,970	4.0%	10,659	-2.8%	
05/06	Total	53,035	2.7%	51,911	-2.1%	51,418	-0.9%	50,750	-1.3%	51,229	0.9%	48,978	-4.4%	48,447	-1.1%	47,695	-1.6%	47,139	-1.2%	45,450	-3.6%	43,111	-5.1%	43,443	0.8%	
	1 Parent	42,157	2.9%	41,243	-2.2%	40,933	-0.8%	40,389	-1.3%	40,809	1.0%	38,976	-4.5%	38,504	-1.2%	38,014	-1.3%	37,557	-1.2%	36,019	-4.1%	34,113	-5.3%	34,547	1.3%	
	2 Parent	10,878	2.1%	10,668	-1.9%	10,485	-1.7%	10,361	-1.2%	10,420	0.6%	10,002	-4.0%	9,943	-0.6%	9,681	-2.6%	9,582	-1.0%	9,431	-1.6%	8,998	-4.6%	8,896	-1.1%	
06/07	Total	37,693	-13.2%	37,639	-0.1%	36,884	-2.0%	38,645	4.8%	39,339	1.8%	42,282	7.5%	42,804	1.2%	42,317	-1.1%	41,985	-0.8%	41,821	-0.4%	42,199	0.9%	41,900	-0.7%	
	1 Parent	30,914	-10.5%	30,987	0.2%	30,284	-2.3%	31,713	4.7%	32,166	1.4%	34,682	7.8%	34,972	0.8%	34,497	-1.4%	34,288	-0.6%	34,169	-0.3%	34,465	0.9%	34,590	0.4%	
	2 Parent	6,779	-23.8%	6,652	-1.9%	6,600	-0.8%	6,932	5.0%	7,173	3.5%	7,600	6.0%	7,832	3.1%	7,820	-0.2%	7,697	-1.6%	7,652	-0.6%	7,734	1.1%	7,310	-5.5%	
07/08	Total	41,113	-1.9%	40,091	-2.5%	39,141	-2.4%	38,817	-0.8%	38,361	-1.2%	39,186	2.2%	38,516	-1.7%	39,142	1.6%	39,447	0.8%	40,566	2.8%	41,202	1.6%	42,002	1.9%	
	1 Parent	34,026	-1.6%	33,321	-2.1%	32,578	-2.2%	32,537	-0.1%	32,207	-1.0%	33,010	2.5%	32,461	-1.7%	32,942	1.5%	33,207	0.8%	34,207	3.0%	34,791	1.7%	35,475	2.0%	
	2 Parent	7,087	-3.1%	6,770	-4.5%	6,563	-3.1%	6,280	-4.3%	6,154	-2.0%	6,176	0.4%	6,055	-2.0%	6,200	2.4%	6,240	0.6%	6,359	1.9%	6,411	0.8%	6,527	1.8%	
08/09	Total	38,845	-7.5%	39,482	1.6%	40,012	1.3%	39,413	-1.5%	39,498	0.2%	40,180	1.7%	40,902	1.8%	41,603	1.7%	43,309	4.1%	44,034	1.7%	45,050	2.3%	46,678	3.6%	
	1 Parent	32,910	-7.2%	33,424	1.6%	33,827	1.2%	33,250	-1.7%	33,314	0.2%	33,840	1.6%	34,316	1.4%	34,840	1.5%	36,191	3.9%	36,697	1.4%	37,459	2.1%	38,414	2.5%	
	2 Parent	5,935	-9.1%	6,058	2.1%	6,185	2.1%	6,163	-0.4%	6,184	0.3%	6,340	2.5%	6,586	3.9%	6,763	2.7%	7,118	5.2%	7,337	3.1%	7,591	3.5%	8,264	8.9%	
09/10	Total	46,645	-0.1%	47,861	2.6%																					
	1 Parent	37,396	-2.7%	37,630	0.6%																					
	2 Parent	9,249	11.9%	10,231	10.6%																					

TRENDS

- The number of CalWORKs adults sanctioned for not participating in the CalWORKs Welfare-to-Work Program increased 2.6% between July 2009 and August 2009.
0.6% increase in One-Parent enrollees
10.6% increase in Two Parent Families
- The number of CalWORKs adults sanctioned for not participating in the CalWORKs Welfare-to-Work Program increased 21.2% between August 2008 and August 2009.
12.6% increase in One-Parent enrollees
68.9% increase in Two Parent Families

a/ One-Parent also known as All Other
Source: WTW 25 and WTW 25A.