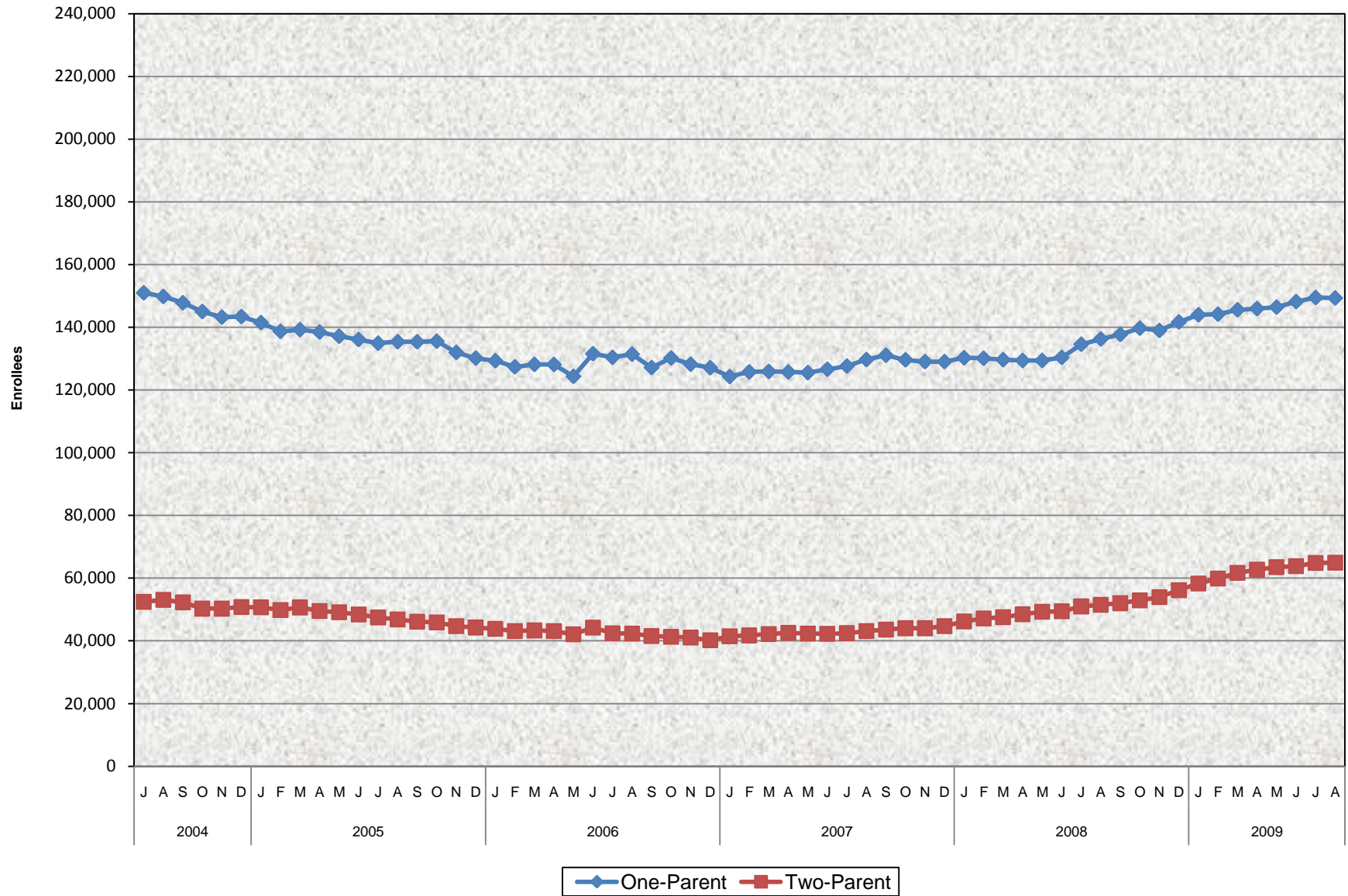


CalWORKs Welfare-to-Work Program Two-Parent and One-Parent^{a/} Enrollees July 2004 - August 2009



^{a/} One-Parent also known as All Other
 Source: WTW 25 and WTW 25A

**CalWORKs Welfare-to-Work Program
Two-Parent and One-Parent^{a/} Enrollees
July 2004 - August 2009**

MONTHLY PERCENT CHANGE

FY		Jul	% Chg	Aug	% Chg	Sep	% Chg	Oct	% Chg	Nov	% Chg	Dec	% Chg	Jan	% Chg	Feb	% Chg	Mar	% Chg	Apr	% Chg	May	% Chg	Jun	% Chg
04/05	Total	203,394		202,898	-0.2%	200,109	-1.4%	195,295	-2.4%	193,490	-0.9%	194,156	0.3%	192,190	-1.0%	188,513	-1.9%	189,906	0.7%	188,008	-1.0%	186,293	-0.9%	184,470	-1.0%
	1 Parent	150,971		149,799	-0.8%	147,798	-1.3%	145,019	-1.9%	143,216	-1.2%	143,400	0.1%	141,461	-1.4%	138,682	-2.0%	139,234	0.4%	138,467	-0.6%	137,135	-1.0%	136,082	-0.8%
	2 Parent	52,423		53,099	1.3%	52,311	-1.5%	50,276	-3.9%	50,274	0.0%	50,756	1.0%	50,729	-0.1%	49,831	-1.8%	50,672	1.7%	49,541	-2.2%	49,158	-0.8%	48,388	-1.6%
05/06	Total	182,379	-1.1%	182,211	-0.1%	181,511	-0.4%	181,451	0.0%	176,703	-2.6%	174,418	-1.3%	173,157	-0.7%	170,518	-1.5%	171,475	0.6%	171,246	-0.1%	166,429	-2.8%	175,759	5.6%
	1 Parent	134,910	-0.9%	135,397	0.4%	135,355	0.0%	135,545	0.1%	131,976	-2.6%	130,153	-1.4%	129,313	-0.6%	127,380	-1.5%	128,156	0.6%	128,137	0.0%	124,344	-3.0%	131,548	5.8%
	2 Parent	47,469	-1.9%	46,814	-1.4%	46,156	-1.4%	45,906	-0.5%	44,727	-2.6%	44,265	-1.0%	43,844	-1.0%	43,138	-1.6%	43,319	0.4%	43,109	-0.5%	42,085	-2.4%	44,211	5.1%
06/07	Total	172,843	-1.7%	173,770	0.5%	168,678	-2.9%	171,487	1.7%	169,246	-1.3%	167,286	-1.2%	165,742	-0.9%	167,493	1.1%	168,093	0.4%	168,307	0.1%	167,841	-0.3%	168,810	0.6%
	1 Parent	130,405	-0.9%	131,415	0.8%	127,148	-3.2%	130,178	2.4%	128,212	-1.5%	127,083	-0.9%	124,274	-2.2%	125,756	1.2%	125,905	0.1%	125,748	-0.1%	125,519	-0.2%	126,580	0.8%
	2 Parent	42,438	-4.0%	42,355	-0.2%	41,530	-1.9%	41,309	-0.5%	41,034	-0.7%	40,203	-2.0%	41,468	3.1%	41,737	0.6%	42,188	1.1%	42,559	0.9%	42,322	-0.6%	42,230	-0.2%
07/08	Total	170,057	0.7%	172,843	1.6%	174,681	1.1%	173,636	-0.6%	173,046	-0.3%	173,757	0.4%	176,461	1.6%	177,250	0.4%	177,212	0.0%	177,904	0.4%	178,647	0.4%	179,849	0.7%
	1 Parent	127,612	0.8%	129,693	1.6%	131,065	1.1%	129,604	-1.1%	129,021	-0.4%	129,032	0.0%	130,254	0.9%	130,086	-0.1%	129,642	-0.3%	129,385	-0.2%	129,394	0.0%	130,376	0.8%
	2 Parent	42,445	0.5%	43,150	1.7%	43,616	1.1%	44,032	1.0%	44,025	0.0%	44,725	1.6%	46,207	3.3%	47,164	2.1%	47,570	0.9%	48,519	2.0%	49,253	1.5%	49,473	0.4%
08/09	Total	185,549	3.2%	187,710	1.2%	189,732	1.1%	192,631	1.5%	192,938	0.2%	197,810	2.5%	202,255	2.2%	204,040	0.9%	207,245	1.6%	208,656	0.7%	209,935	0.6%	211,968	1.0%
	1 Parent	134,570	3.2%	136,242	1.2%	137,719	1.1%	139,699	1.4%	138,961	-0.5%	141,682	2.0%	143,966	1.6%	144,163	0.1%	145,573	1.0%	145,951	0.3%	146,403	0.3%	148,171	1.2%
	2 Parent	50,979	3.0%	51,468	1.0%	52,013	1.1%	52,932	1.8%	53,977	2.0%	56,128	4.0%	58,289	3.9%	59,877	2.7%	61,672	3.0%	62,705	1.7%	63,532	1.3%	63,797	0.4%
08/09	Total	214,295	1.1%	214,252	0.0%																				
	1 Parent	149,459	0.9%	149,306	-0.1%																				
	2 Parent	64,836	1.6%	64,946	0.2%																				

TRENDS

- The number of CalWORKs adults participating in CalWORKs increased 0.0% between July 2009 and August 2009.
-0.1% decrease in One-Parent enrollees
0.2% increase in Two Parent Families
- The number of CalWORKs adults participating in CalWORKs increased 14.1% between August 2008 and August 2009.
9.6% increase in One-Parent enrollees
26.2% increase in Two Parent Families