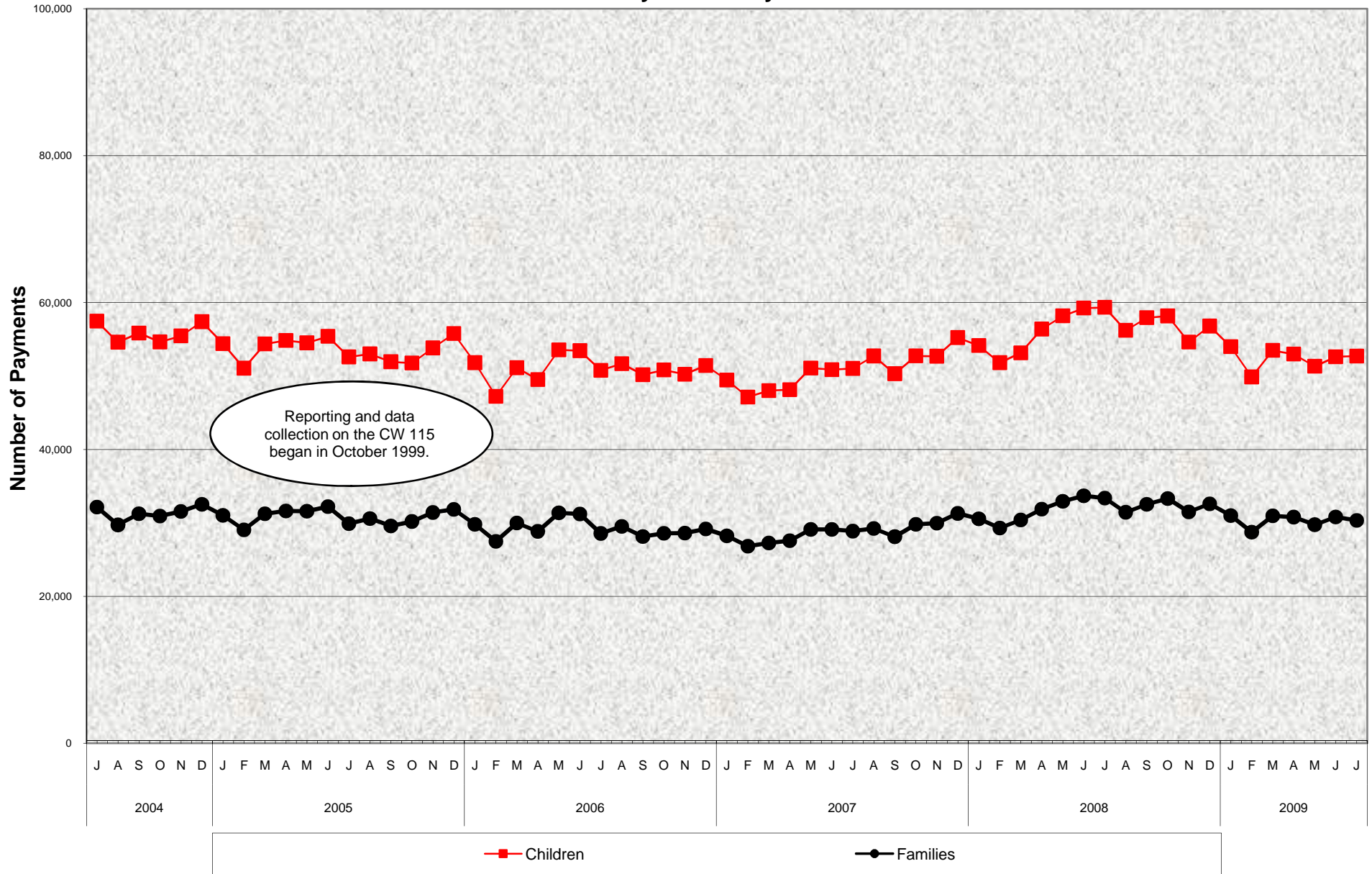


Stage 1 Child Care - CalWORKs Families Number of Payments Issued to Children and Families July 2004 - July 2009



Stage 1 Child Care - CalWORKs Families
Number of Payments Issued to Children and Families
July 2004 - July 2009

MONTHLY PERCENT CHANGE

FY		Jul	% Chg	Aug	% Chg	Sep	% Chg	Oct	% Chg	Nov	% Chg	Dec	% Chg	Jan	% Chg	Feb	% Chg	Mar	% Chg	Apr	% Chg	May	% Chg	Jun	% Chg
04/05	Children	57,463	4.5%	54,597	-5.0%	55,845	2.3%	54,627	-2.2%	55,458	1.5%	57,382	3.5%	54,400	-5.2%	51,063	-6.1%	54,357	6.5%	54,839	0.9%	54,505	-0.6%	55,399	1.6%
	Families	32,164	5.5%	29,729	-7.6%	31,241	5.1%	30,947	-0.9%	31,574	2.0%	32,534	3.0%	31,022	-4.6%	29,063	-6.3%	31,252	7.5%	31,631	1.2%	31,603	-0.1%	32,224	2.0%
05/06	Children	52,601	-5.1%	53,000	0.8%	51,939	-2.0%	51,759	-0.3%	53,823	4.0%	55,765	3.6%	51,809	-7.1%	47,228	-8.8%	51,125	8.3%	49,506	-3.2%	53,553	8.2%	53,437	-0.2%
	Families	29,899	-7.2%	30,595	2.3%	29,589	-3.3%	30,196	2.1%	31,421	4.1%	31,837	1.3%	29,801	-6.4%	27,474	-7.8%	29,984	9.1%	28,846	-3.8%	31,373	8.8%	31,212	-0.5%
06/07	Children	50,771	-5.0%	51,676	1.8%	50,180	-2.9%	50,824	1.3%	50,230	-1.2%	51,428	2.4%	49,454	-3.8%	47,141	-4.7%	48,020	1.9%	48,143	0.3%	51,080	6.1%	50,858	-0.4%
	Families	28,568	-8.5%	29,522	3.3%	28,150	-4.6%	28,589	1.6%	28,624	0.1%	29,190	2.0%	28,233	-3.3%	26,830	-5.0%	27,271	1.6%	27,575	1.1%	29,122	5.6%	29,110	0.0%
07/08	Children	51,032	0.3%	52,719	3.3%	50,314	-4.6%	52,735	4.8%	52,695	-0.1%	55,229	4.8%	54,142	-2.0%	51,813	-4.3%	53,149	2.6%	56,385	6.1%	58,182	3.2%	59,247	1.8%
	Families	28,884	-0.8%	29,243	1.2%	28,125	-3.8%	29,811	6.0%	29,966	0.5%	31,296	4.4%	30,560	-2.4%	29,294	-4.1%	30,396	3.8%	31,885	4.9%	32,941	3.3%	33,693	2.3%
08/09	Children	59,337	0.2%	56,207	-5.3%	57,933	3.1%	58,169	0.4%	54,614	-6.1%	56,787	4.0%	53,991	-4.9%	49,875	-7.6%	53,482	7.2%	52,984	-0.9%	51,321	-3.1%	52,612	2.5%
	Families	33,375	-0.9%	31,452	-5.8%	32,539	3.5%	33,310	2.4%	31,507	-5.4%	32,600	3.5%	31,001	-4.9%	28,741	-7.3%	30,963	7.7%	30,794	-0.5%	29,757	-3.4%	30,800	3.5%
09/10	Children	52,716	0.2%																						
	Families	30,345	-1.5%																						

TRENDS

- **Payments to Children increased 0.2% between June 2009 and July 2009**
Children payments decreased -11.2% between July 2008 and July 2009
- **Payments to Families decreased -1.5% between June 2009 and July 2009**
Family payments decreased -9.1% between July 2008 and July 2009