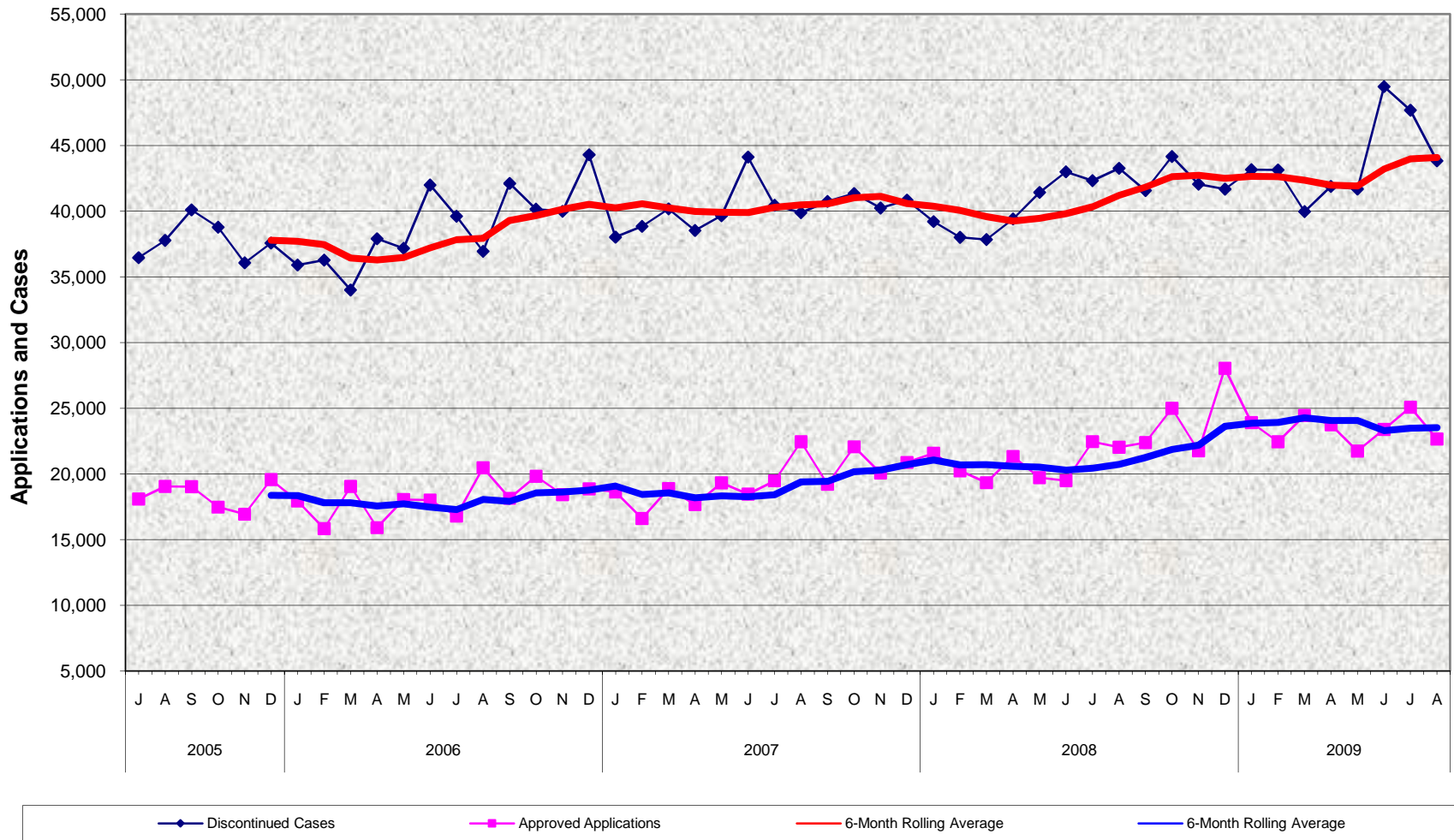


CalWORKs Program Discontinued Cases and Approved Applications July 2005 - August 2009



CalWORKs Program Discontinued Cases and Approved Applications July 2005 - August 2009

MONTHLY PERCENT CHANGE

FY		Jul	% Chg	Aug	% Chg	Sep	% Chg	Oct	% Chg	Nov	% Chg	Dec	% Chg	Jan	% Chg	Feb	% Chg	Mar	% Chg	Apr	% Chg	May	% Chg	Jun	% Chg
05/06	Discontinued	36,452	0.2%	37,771	3.6%	40,095	6.2%	38,777	-3.3%	36,059	-7.0%	37,570	4.2%	35,893	-4.5%	36,274	1.1%	34,000	-6.3%	37,906	11.5%	37,165	-2.0%	41,983	13.0%
	Approved	18,105	-28.6%	19,056	5.3%	19,032	-0.1%	17,484	-8.1%	16,944	-3.1%	19,573	15.5%	17,949	-8.3%	15,845	-11.7%	19,056	20.3%	15,920	-16.5%	18,060	13.4%	18,023	-0.2%
06/07	Discontinued	39,604	-5.7%	36,948	-6.7%	42,099	13.9%	40,155	-4.6%	39,990	-0.4%	44,284	10.7%	38,016	-14.2%	38,830	2.1%	40,177	3.5%	38,528	-4.1%	39,640	2.9%	44,104	11.3%
	Approved	16,812	-6.7%	20,478	21.8%	18,152	-11.4%	19,836	9.3%	18,431	-7.1%	18,874	2.4%	18,647	-1.2%	16,618	-10.9%	18,895	13.7%	17,670	-6.5%	19,328	9.4%	18,479	-4.4%
07/08	Discontinued	40,440	-8.3%	39,878	-1.4%	40,737	2.2%	41,339	1.5%	40,238	-2.7%	40,834	1.5%	39,201	-4.0%	38,004	-3.1%	37,837	-0.4%	39,397	4.1%	41,416	5.1%	42,982	3.8%
	Approved	19,483	5.4%	22,461	15.3%	19,217	-14.4%	22,072	14.9%	20,081	-9.0%	20,885	4.0%	21,585	3.4%	20,238	-6.2%	19,340	-4.4%	21,343	10.4%	19,729	-7.6%	19,491	-1.2%
08/09	Discontinued	42,316	-1.5%	43,256	2.2%	41,571	-3.9%	44,147	6.2%	42,053	-4.7%	41,667	-0.9%	43,154	3.6%	43,135	0.0%	39,954	-7.4%	41,869	4.8%	41,679	-0.5%	49,466	18.7%
	Approved	22,466	15.3%	22,034	-1.9%	22,390	1.6%	25,000	11.7%	21,755	-13.0%	28,047	28.9%	23,915	-14.7%	22,450	-6.1%	24,464	9.0%	23,740	-3.0%	21,753	-8.4%	23,400	7.6%
09/10	Discontinued	47,673	-3.6%	43,809	-8.1%																				
	Approved	25,084	7.2%	22,672	-9.6%																				

TRENDS

- The number of CalWORKs discontinued cases decreased 8.1% between July 2009 and August 2009.
- The number of CalWORKs discontinued cases increased 1.3% between August 2008 and August 2009.
- The number of CalWORKs approved applications decreased 9.6% between July 2009 and August 2009.
- The number of CalWORKs approved applications increased 2.9% between August 2008 and August 2009.