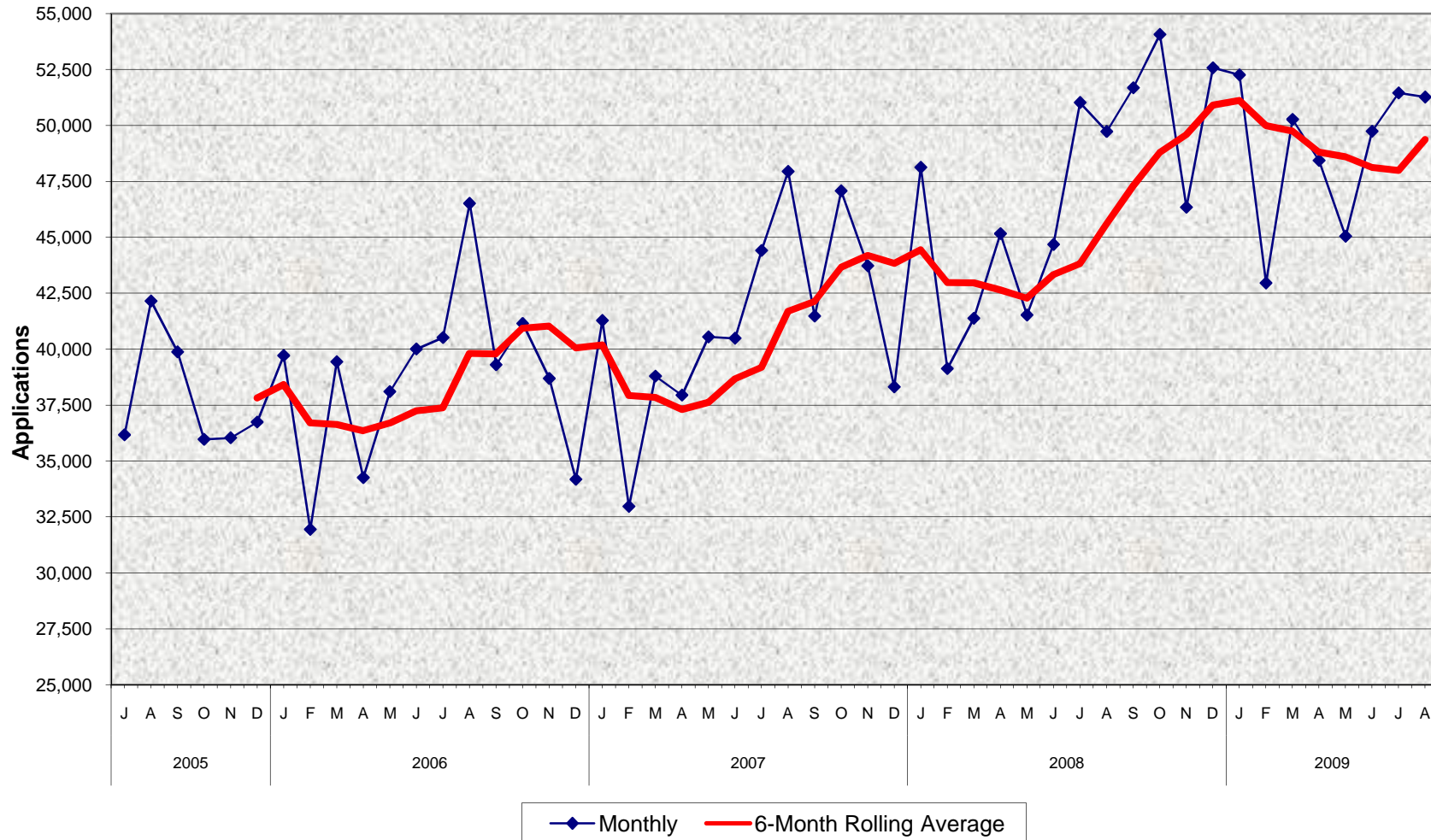


### CalWORKs Program Applications Received July 2005 - August 2009



## CalWORKs Program Applications Received July 2005 - August 2009

### MONTHLY PERCENT CHANGE

FY	Jul	% Chg	Aug	% Chg	Sep	% Chg	Oct	% Chg	Nov	% Chg	Dec	% Chg	Jan	% Chg	Feb	% Chg	Mar	% Chg	Apr	% Chg	May	% Chg	Jun	% Chg
05/06	36,165	-3.4%	42,153	16.6%	39,878	-5.4%	35,967	-9.8%	36,034	0.2%	36,739	2.0%	39,712	8.1%	31,936	-19.6%	39,438	23.5%	34,255	-13.1%	38,103	11.2%	40,005	5.0%
06/07	40,518	1.3%	46,516	14.8%	39,303	-15.5%	41,149	4.7%	38,694	-6.0%	34,175	-11.7%	41,284	20.8%	32,962	-20.2%	38,794	17.7%	37,942	-2.2%	40,552	6.9%	40,487	-0.2%
07/08	44,418	9.7%	47,947	7.9%	41,477	-13.5%	47,076	13.5%	43,731	-7.1%	38,312	-12.4%	48,132	25.6%	39,129	-18.7%	41,384	5.8%	45,166	9.1%	41,528	-8.1%	44,686	7.6%
08/09	51,026	14.2%	49,733	-2.5%	51,692	3.9%	54,078	4.6%	46,345	-14.3%	52,585	13.5%	52,270	-0.6%	42,961	-17.8%	50,277	17.0%	48,433	-3.7%	45,047	-7.0%	49,744	10.4%
09/10	51,457	3.4%	51,278	-0.3%																				

### TRENDS

- The number of CalWORKs applications decreased 0.3% between July 2009 and August 2009.
- The number of CalWORKs applications increased 3.1% between August 2008 and August 2009.