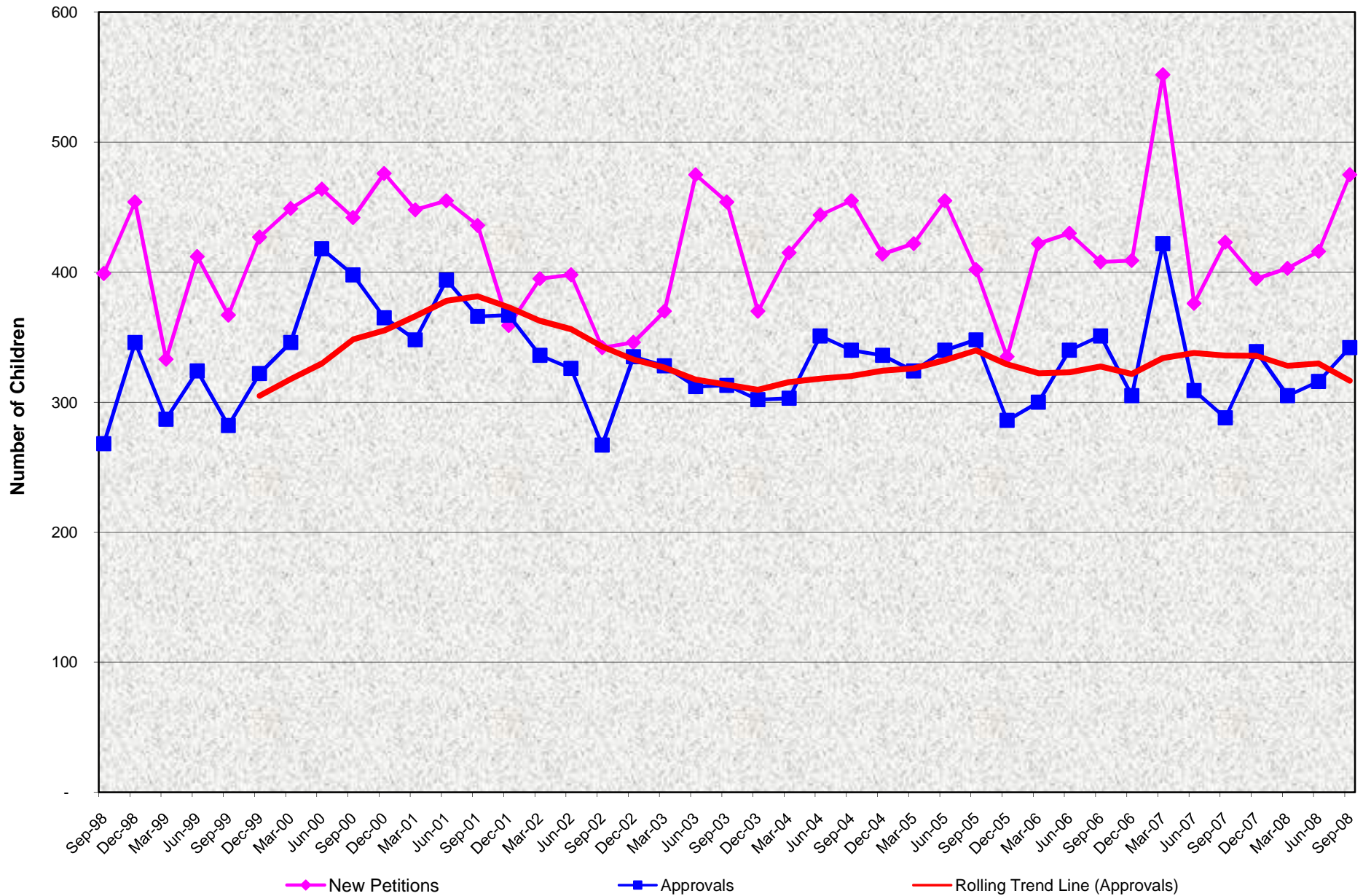


Independent Adoption Program New Petitions to Adopt and Approvals Recommended Quarterly Activity from September 1998 through September 2008



**Independent Adoption Program
New Petitions to Adopt and Approvals Recommended
Quarterly Activity from September 1998 through September 2008**

QUARTERLY PERCENT CHANGE

FY		Jul - Sep Quarter	% Change	Oct - Dec Quarter	% Change	Jan - Mar Quarter	% Change	Apr - Jun Quarter	% Change
98/99	New Petitions	399	-23.6%	454	13.8%	333	-26.7%	412	23.7%
	Approvals	268	-30.4%	346	29.1%	287	-17.1%	324	12.9%
99/00	New Petitions	367	-10.9%	427	16.3%	449	5.2%	464	3.3%
	Approvals	282	-13.0%	322	14.2%	346	7.5%	418	20.8%
00/01	New Petitions	442	-4.7%	476	7.7%	448	-5.9%	455	1.6%
	Approvals	398	-4.8%	365	-8.3%	348	-4.7%	394	13.2%
01/02	New Petitions	436	-4.2%	359	-17.7%	395	10.0%	398	0.8%
	Approvals	366	-7.1%	367	0.3%	336	-8.4%	326	-3.0%
02/03	New Petitions	342	-14.1%	346	1.2%	370	6.9%	475	28.4%
	Approvals	267	-18.1%	335	25.5%	328	-2.1%	312	-4.9%
03/04	New Petitions	454	-4.4%	370	-18.5%	415	12.2%	444	7.0%
	Approvals	313	0.3%	302	-3.5%	303	0.3%	351	15.8%
04/05	New Petitions	466	5.0%	414	-11.2%	422	1.9%	455	7.8%
	Approvals	341	-2.8%	336	-1.5%	324	-3.6%	340	4.9%
05/06	New Petitions	402	-11.6%	335	-16.7%	422	26.0%	430	1.9%
	Approvals	348	2.4%	286	-17.8%	348	21.7%	286	-17.8%
06/07	New Petitions	408	-5.1%	409	0.2%	552	35.0%	376	-31.9%
	Approvals	351	3.2%	305	-13.1%	422	38.4%	309	-26.8%
07/08	New Petitions	423	12.5%	395	-6.6%	403	2.0%	416	3.2%
	Approvals	288	-6.8%	339	17.7%	305	-10.0%	316	3.6%
08/09	New Petitions	475	14.2%						
	Approvals	342	8.2%						

TRENDS

- Because the adoption process requires time, the number of Approvals Recommended reflects New Petitions to Adopt submitted in prior quarters.
- Typically, more adoptions are processed at the end of the fiscal year resulting in an annual cyclical peak in adoption activity.
- Recommendations to the court are usually, but not always, followed by the court in their final determinations.