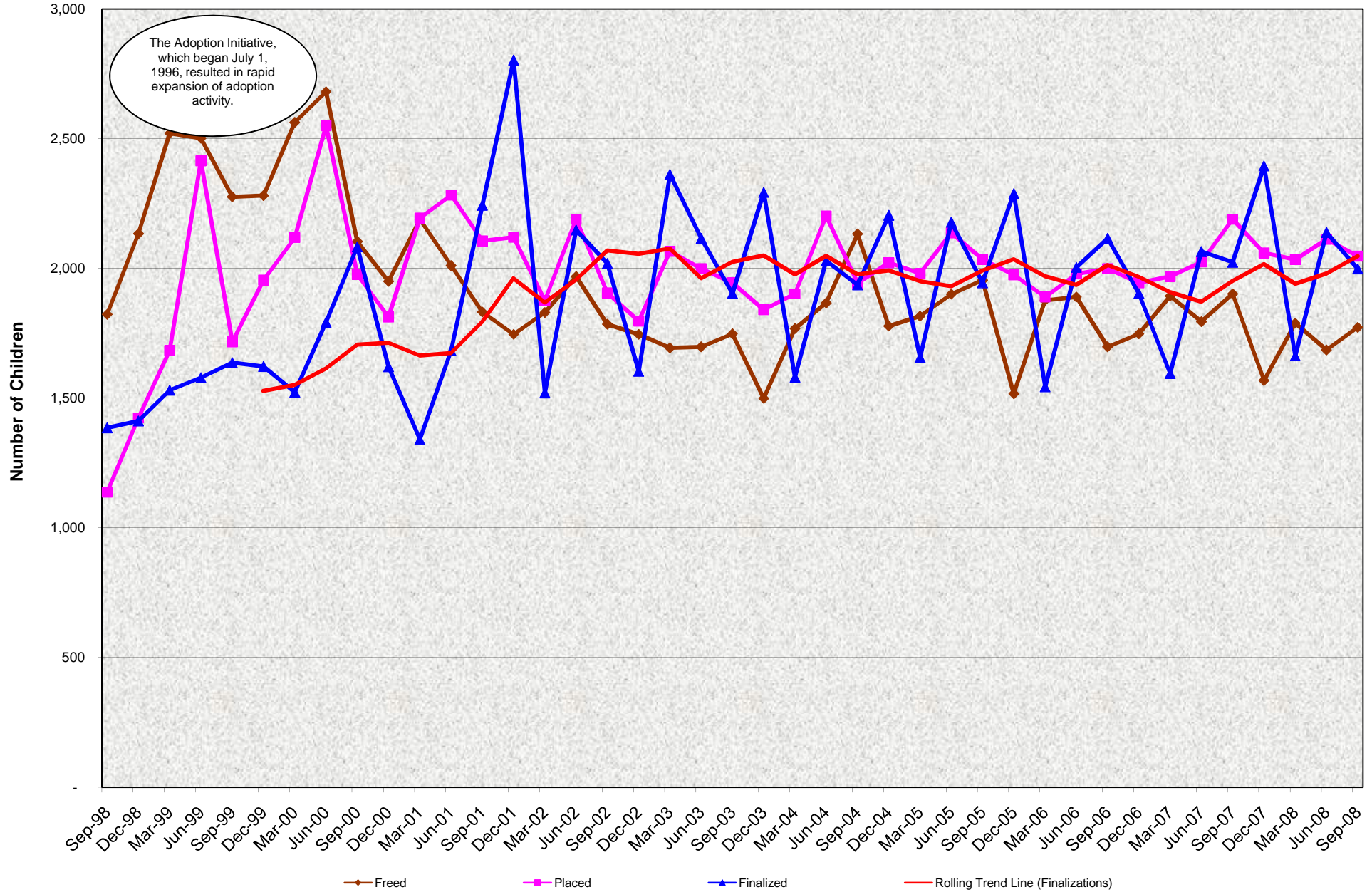


Agency Adoption Program
Freed for Adoption, Placed for Adoption, and Finalized Adoptions
Quarterly Activity from September 1998 through September 2008



**Agency Adoption Program
Freed for Adoption, Placed for Adoption, and Finalized Adoptions
Quarterly Activity from September 1998 through September 2008**

QUARTERLY PERCENT CHANGE

FY		Jul-Sep Quarter	% Change	Oct - Dec Quarter	% Change	Jan - Mar Quarter	% Change	Apr - Jun Quarter	% Change
98/99	Freed	1,823	-7.4%	2,134	17.1%	2,521	18.1%	2,502	-0.8%
	Placed	1,138	-42.9%	1,424	25.1%	1,684	18.3%	2,415	43.4%
	Finalized	1,386	-5.2%	1,412	1.9%	1,531	8.4%	1,579	3.1%
99/00	Freed	2,276	-9.0%	2,281	0.2%	2,563	12.4%	2,681	4.6%
	Placed	1,717	-28.9%	1,955	13.9%	2,119	8.4%	2,550	20.3%
	Finalized	1,637	3.7%	1,622	-0.9%	1,523	-6.1%	1,793	17.7%
00/01	Freed	2,104	-21.5%	1,950	-7.3%	2,189	12.3%	2,011	-8.1%
	Placed	1,977	-22.5%	1,813	-8.3%	2,194	21.0%	2,283	4.1%
	Finalized	2,083	16.2%	1,621	-22.2%	1,341	-17.3%	1,683	25.5%
01/02	Freed	1,836	-8.7%	1,749	-4.7%	1,835	4.9%	1,974	7.6%
	Placed	2,112	-7.5%	2,128	0.8%	1,884	-11.5%	2,196	16.6%
	Finalized	2,248	33.6%	2,807	24.9%	1,584	-43.6%	2,156	36.1%
02/03	Freed	1,785	-9.6%	1,746	-2.2%	1,694	-3.0%	1,698	0.2%
	Placed	1,906	-13.2%	1,797	-5.7%	2,066	15.0%	1,999	-3.2%
	Finalized	2,019	-6.4%	1,604	-20.6%	2,363	47.3%	2,116	-10.5%
03/04	Freed	1,748	2.9%	1,499	-14.2%	1,768	17.9%	1,867	5.6%
	Placed	1,945	-2.7%	1,841	-5.3%	1,902	3.3%	2,202	15.8%
	Finalized	1,903	-10.1%	2,293	20.5%	1,581	-31.1%	2,030	28.4%
04/05	Freed	2,133	14.2%	1,778	-16.6%	1,816	2.1%	1,901	4.7%
	Placed	1,944	-11.7%	2,022	4.0%	1,981	-2.0%	2,137	7.9%
	Finalized	1,937	-4.6%	2,205	13.8%	1,657	-24.9%	2,178	31.4%
05/06	Freed	1,955	2.8%	1,517	-22.4%	1,877	23.7%	1,890	0.7%
	Placed	2,035	-4.8%	1,975	-2.9%	1,890	-4.3%	1,979	4.7%
	Finalized	1,945	-10.7%	2,289	17.7%	1,544	-32.5%	2,004	29.8%
06/07	Freed	1,698	-10.2%	1,748	3%	1,894	28.1%	1,795	-5.2%
	Placed	1,999	1.0%	1,945	-3%	1,969	1.1%	2,025	2.8%
	Finalized	2,116	5.6%	1,903	-10%	1,595	-26.4%	2,065	29.5%
07/08	Freed	1,902	-17.6%	1,568	-18%	1,789	14.1%	1,686	-5.8%
	Placed	2,190	-5.9%	2,060	-6%	2,034	-1.3%	2,112	3.8%
	Finalized	2,024	18.3%	2,395	18%	1,663	-30.6%	2,139	28.6%
08/09	Freed	1,773	5.2%						
	Placed	2,047	-3.1%						
	Finalized	1,998	-6.6%						

TRENDS

- **Due to the activity of the Adoption Initiative, which began July 1, 1996, there has been a rapid increase in the number of children freed for adoption, the number of adoptive placements made, and the number of adoptions finalized.**
 - 93.7% increase in children freed for adoption between 1995-96 and 2000-01
 - 112.6% increase in adoptive placements between 1995-96 and 2000-01
 - 75.0% increase in adoptions completed between 1995-96 and 2000-01
- **Because the adoption process requires time, the number of finalized adoptions in one year reflects freeing actions and adoptive placements in prior years.**
- **Typically, more adoptions are processed at the end of the fiscal year resulting in an annual cyclical peak in adoption activity.**
- **Expectations are that public agency adoption activity will probably continue at 2000-01 levels.**