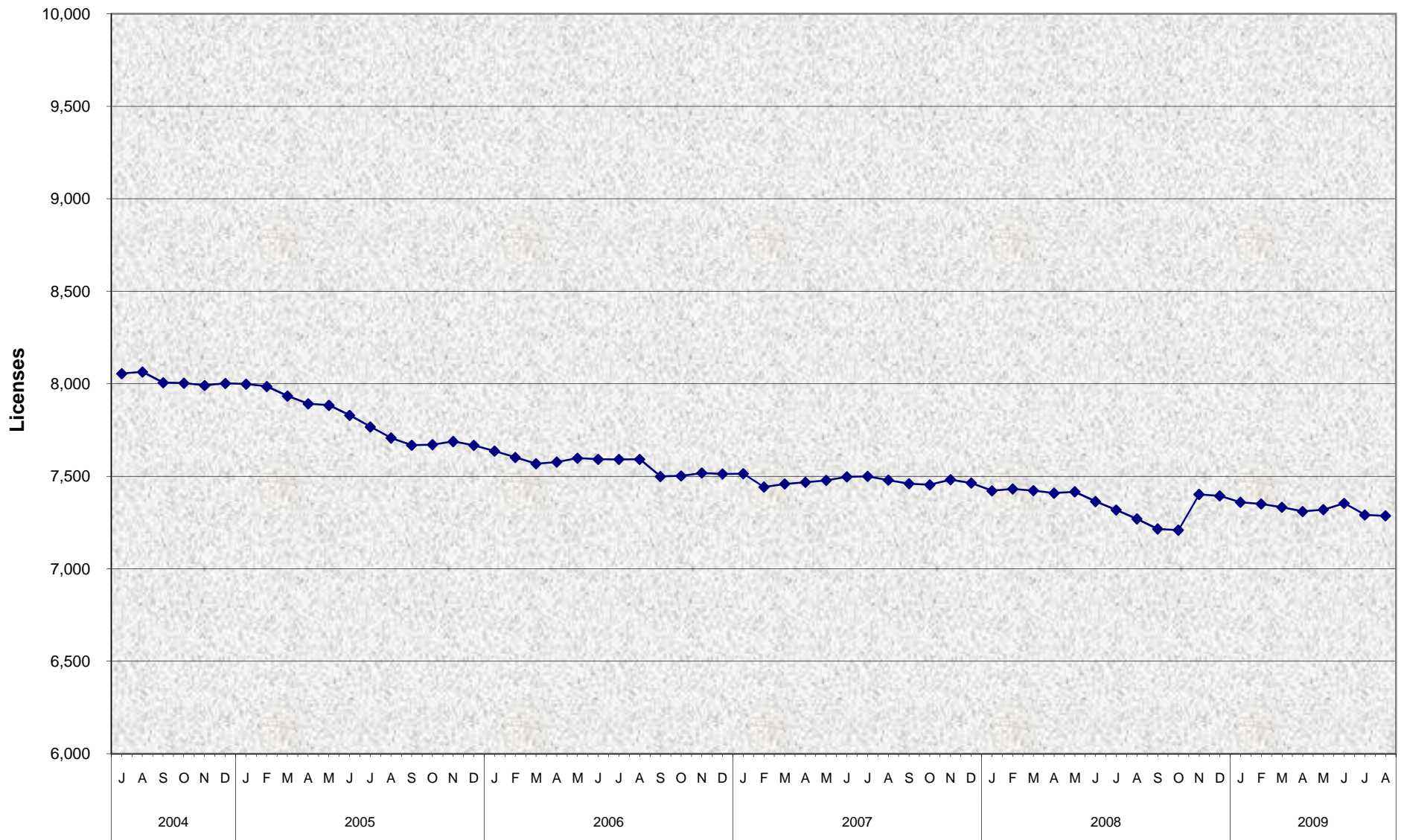


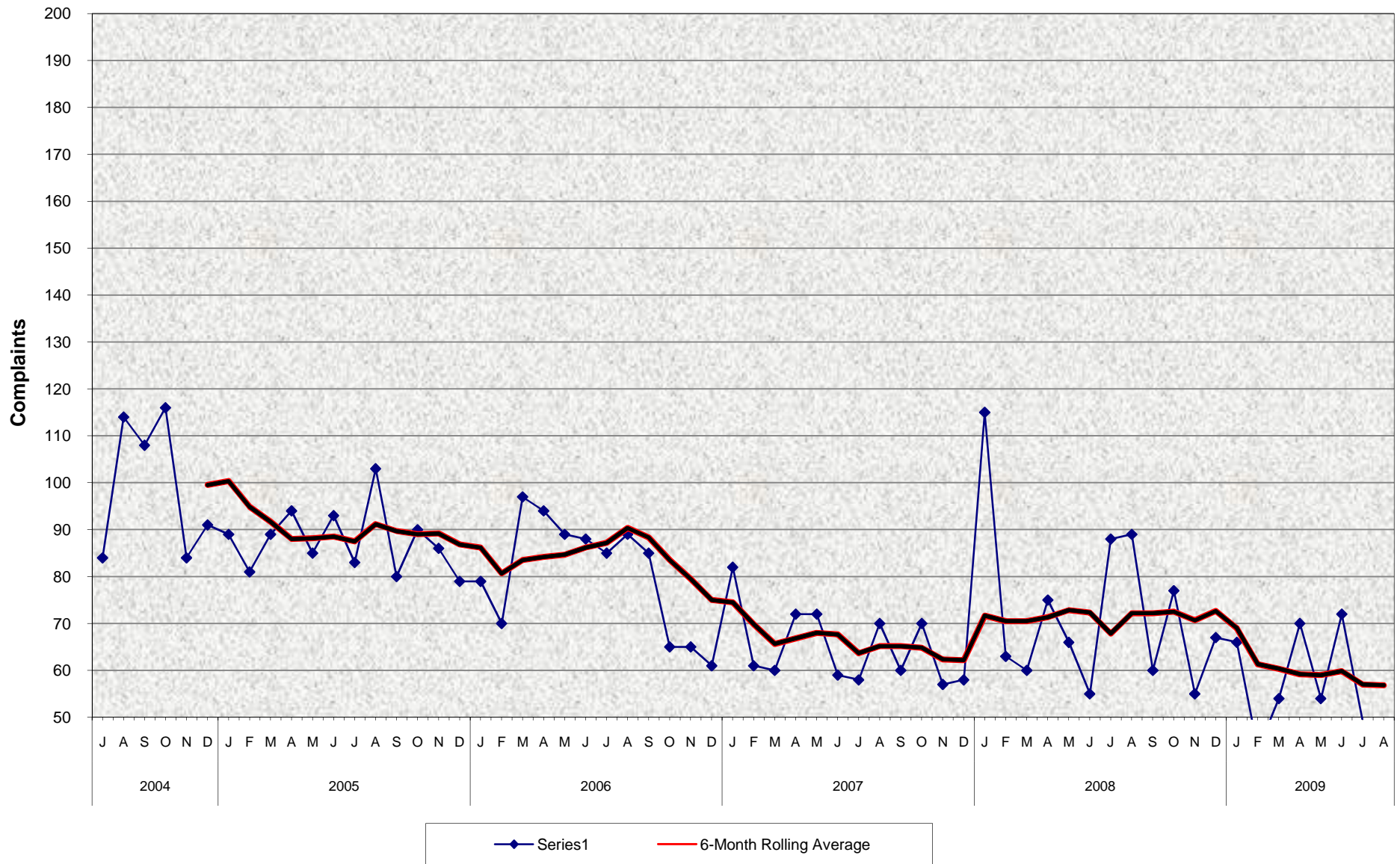
Community Care Licensing Program Licenses In Force For Licensed Foster Family Homes July 2004 - August 2009^{a/ b/}



a/ b/ See footnotes on Page 3.

Source: LIC 181 Licensing of Facilities for Children Monthly Statistical Report, Item 5, Cell 22.

Community Care Licensing Program Complaints Against Licensed Foster Family Homes July 2004 - August 2009^{a/ b/ c/}



a/ b/ c/ See footnotes on Page 3.
 Source: LIC 181 Licensing of Facilities for Children Monthly Statistical Report, Item 14, Cell 49.

Community Care Licensing Program

Licenses in Force and Complaints Against Licensed Foster Family Homes

July 2004 - August 2009^{a/ b/ c/}

MONTHLY PERCENT CHANGE

FY		Jul	% Chg	Aug	% Chg	Sep	% Chg	Oct	% Chg	Nov	% Chg	Dec	% Chg	Jan	% Chg	Feb	% Chg	Mar	% Chg	Apr	% Chg	May	% Chg	Jun	% Chg
04/05	Licenses	8,055		8,064	0.1%	8,006	-0.7%	8,003	0.0%	7,991	-0.1%	8,002	0.1%	7,998	0.0%	7,985	-0.2%	7,934	-0.6%	7,892	-0.5%	7,884	-0.1%	7,830	-0.7%
	Complaints	84		114	35.7%	108	-5.3%	116	7.4%	84	-27.6%	91	8.3%	89	-2.2%	81	-9.0%	89	9.9%	94	5.6%	85	-9.6%	93	9.4%
05/06	Licenses	7,767	-0.8%	7,707	-0.8%	7,668	-0.5%	7,671	0.0%	7,688	0.2%	7,667	-0.3%	7,636	-0.4%	7,602	-0.4%	7,568	-0.4%	7,577	0.1%	7,598	0.3%	7,592	-0.1%
	Complaints	83	-10.8%	103	24.1%	80	-22.3%	90	12.5%	86	-4.4%	79	-8.1%	79	0.0%	70	-11.4%	97	38.6%	94	-3.1%	89	-5.3%	88	-1.1%
06/07	Licenses	7,591	0.0%	7,592	0.0%	7,499	-1.2%	7,502	0.0%	7,518	0.2%	7,513	-0.1%	7,514	0.0%	7,442	-1.0%	7,459	0.2%	7,468	0.1%	7,478	0.1%	7,497	0.3%
	Complaints	85	-3.4%	89	4.7%	85	-4.5%	65	-23.5%	65	0.0%	61	-6.2%	82	34.4%	61	-25.6%	60	-1.6%	72	20.0%	72	0.0%	59	-18.1%
07/08	Licenses	7,500	0.0%	7,479	-0.3%	7,460	-0.3%	7,454	-0.1%	7,482	0.4%	7,464	-0.2%	7,422	-0.6%	7,432	0.1%	7,423	-0.1%	7,409	-0.2%	7,416	0.1%	7,364	-0.7%
	Complaints	58	-1.7%	70	20.7%	60	-14.3%	70	16.7%	57	-18.6%	58	1.8%	115	98.3%	63	-45.2%	60	-4.8%	75	25.0%	66	-12.0%	55	-16.7%
08/09	Licenses	7,318	-0.6%	7,270	-0.7%	7,216	-0.7%	7,209	-0.1%	7,402	2.7%	7,394	-0.1%	7,360	-0.5%	7,351	-0.1%	7,333	-0.2%	7,310	-0.3%	7,320	0.1%	7,354	0.5%
	Complaints	88	60.0%	89	1.1%	60	-32.6%	77	28.3%	55	-28.6%	67	21.8%	66	-1.5%	43	-34.8%	54	25.6%	70	29.6%	54	-22.9%	72	33.3%
09/10	Licenses	7,291	-81.8%	7,286	-0.1%																				
	Complaints	49	-31.9%	42	-14.3%																				

TRENDS

- The number of licensed Foster Family Homes decreased 0.1% between July 2009 and August 2009.
- The number of licensed Foster Family Homes increased 0.2% between August 2008 and August 2009.
- The number of complaints against Licensed Foster Family Homes decreased 14.3% between July 2009 and August 2009.
- The number of complaints against Licensed Foster Family Homes decreased 52.8% between August 2008 and August 2009.

a/ As of July 2009, 39 counties are under contract with the California Department of Social Services (CDSS) to license Foster Family Homes and Large and Small Child Care Homes. Mendocino has returned licensing to the State as of 7/1/09. CDSS conducts the licensing requirements for the remaining 19 counties. See page 4.

b/ Prior month data used: San Bernardino and Tulare (10/04 for 11/04), Ventura (11/04 for 12/04) and Placer (4/05 for 5/05).

c/ Complaint data became available for Contra Costa County effective April 2005.

Community Care Licensing Program
Counties that License Foster Family Homes and Large and Small Family Child Care Homes
July 2004 - August 2009

County	State Calendar Year					
	2004	2005	2006	2007	2008	2009
Statewide	41	41	40	40	40	39
Alameda	Yes	Yes	Yes	Yes	Yes	Yes
Alpine						
Amador						
Butte	Yes	Yes	Yes	Yes	Yes	Yes
Calaveras						
Colusa						
Contra Costa	Yes	Yes	Yes	Yes	Yes	Yes
Del Norte	Yes ^{a/}	Yes ^{a/}	Yes ^{a/}	Yes ^{a/}	Yes ^{a/}	Yes ^{a/}
El Dorado	Yes	Yes	Yes	Yes	Yes	Yes
Fresno	Yes	Yes	Yes	Yes	Yes	Yes
Glenn	Yes	Yes	Yes	Yes	Yes	Yes
Humboldt						
Imperial	Yes	Yes	Yes	Yes	Yes	Yes
Inyo	Yes ^{a/}	Yes ^{a/}	Yes ^{a/}	Yes ^{a/}	Yes ^{a/}	Yes ^{a/}
Kern	Yes	Yes	Yes	Yes	Yes	Yes
Kings	Yes	Yes	Yes	Yes	Yes	Yes
Lake						
Lassen						
Los Angeles						
Madera						
Marin	Yes ^{a/}	Yes ^{a/}	Yes ^{a/}	Yes	Yes	Yes
Mariposa	Yes	Yes	Yes	Yes	Yes	Yes
Mendocino	Yes ^{a/}	Yes ^{a/}	Yes ^{a/}	Yes ^{a/}	Yes ^{a/}	
Merced	Yes	Yes	Yes	Yes	Yes	Yes
Modoc						
Mono						
Monterey	Yes	Yes	Yes	Yes	Yes	Yes
Napa	Yes	Yes	Yes	Yes	Yes	Yes
Nevada						
Orange	Yes	Yes	Yes	Yes	Yes	Yes
Placer	Yes	Yes	Yes	Yes	Yes	Yes
Plumas						
Riverside						
Sacramento	Yes ^{a/}	Yes ^{a/}	Yes ^{a/}	Yes ^{a/}	Yes ^{a/}	Yes ^{a/}
San Benito	Yes	Yes	Yes	Yes	Yes	Yes
San Bernardino	Yes	Yes	Yes	Yes	Yes	Yes
San Diego	Yes	Yes	Yes	Yes	Yes	Yes
San Francisco	Yes	Yes	Yes	Yes	Yes	Yes
San Joaquin	Yes	Yes	Yes	Yes	Yes	Yes
San Luis Obispo	Yes	Yes	Yes	Yes	Yes	Yes
San Mateo	Yes	Yes	Yes	Yes	Yes	Yes
Santa Barbara	Yes	Yes	Yes	Yes	Yes	Yes
Santa Clara	Yes	Yes	Yes	Yes	Yes	Yes
Santa Cruz	Yes	Yes	Yes	Yes	Yes	Yes
Shasta	Yes	Yes	Yes	Yes	Yes	Yes
Sierra						
Siskiyou						
Solano	Yes	Yes	Yes	Yes	Yes	Yes
Sonoma	Yes	Yes	Yes	Yes	Yes	Yes
Stanislaus	Yes	Yes	Yes	Yes	Yes	Yes
Sutter	Yes	Yes	Yes	Yes	Yes	Yes
Tehama	Yes	Yes	Yes	Yes	Yes	Yes
Trinity						
Tulare	Yes	Yes	Yes	Yes	Yes	Yes
Tuolumne	Yes	Yes	Yes	Yes	Yes	Yes
Ventura	Yes	Yes	Yes	Yes	Yes	Yes
Yolo	Yes	Yes				
Yuba	Yes	Yes	Yes	Yes	Yes	Yes

a/ Counties that also licensed Large and Small Family Child Care Homes.
Source: LIC 181 Licensing of Facilities for Children Monthly Statistical Report